

**bsm-41670M****[ Primary Antibody ]****Bioss**  
**ANTIBODIES**

www.bioss.com.cn

sales@bioss.com.cn

techsupport@bioss.com.cn

400-901-9800

**Prostate Specific Antigen Mouse mAb****DATASHEET****Host:** Mouse**Isotype:** IgG1**Clonality:** Monoclonal**CloneNo.:** 4C4**Target:** Prostate Specific Antigen**Purification:** affinity purified by Protein A**Storage:** Size : 50ul/100ul/200ul

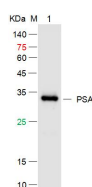
0.01M PBS (pH7.4).

Size : 200ug (PBS only)

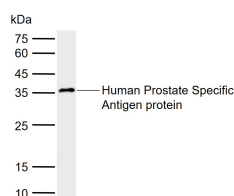
0.01M PBS

Shipped at 4°C. Store at -20°C for one year. Avoid repeated freeze/thaw cycles.

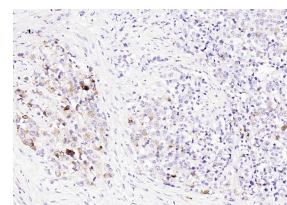
**Background:** Kallikreins are a subgroup of serine proteases having diverse physiological functions. Growing evidence suggests that many kallikreins are implicated in carcinogenesis and some have potential as novel cancer and other disease biomarkers. This gene is one of the fifteen kallikrein subfamily members located in a cluster on chromosome 19. Its protein product is a protease present in seminal plasma. It is thought to function normally in the liquefaction of seminal coagulum, presumably by hydrolysis of the high molecular mass seminal vesicle protein. Serum level of this protein, called PSA in the clinical setting, is useful in the diagnosis and monitoring of prostatic carcinoma. Alternate splicing of this gene generates several transcript variants encoding different isoforms. [provided by RefSeq, Jul 2008].

**Applications:** WB (1:500-2000)**IHC-P** (1:400-800)**IHC-F** (1:400-800)**IF** (1:100-500)**ELISA** (1:5000-10000)**Reactivity:** Human**Predicted MW.:** 23 kDa**Subcellular Location:** Secreted**VALIDATION IMAGES**

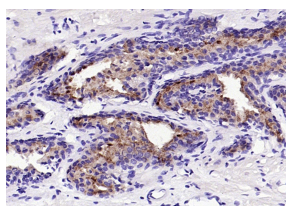
Sample: Lane 1: Prostate Specific Antigen (PSA) Protein at 500ng Primary: Mouse Anti-PSA Monoclonal Antibody at 1/1000 dilution (Cat. bsm-41670M) Secondary: IRDye800CW Goat Anti-Mouse IgG at 1/20000 dilution Predicted band size: 34kD Observed band size: 32kD



Sample: Lane 1: Human Prostate Specific Antigen protein Primary: Anti-Prostate Specific Antigen (bsm-41670M) at 1/1000 dilution Secondary: IRDye800CW Goat Anti-Mouse IgG at 1/20000 dilution Predicted band size: 23 kDa Observed band size: 35 kDa



Paraformaldehyde-fixed, paraffin embedded (Human Prostate Tumor); Antigen retrieval by boiling in sodium citrate buffer (pH6.0) for 15min; Block endogenous peroxidase by 3% hydrogen peroxide for 20 minutes; Blocking buffer (normal goat serum) at 37°C for 30min; Incubation with (Prostate Specific Antigen) Monoclonal Antibody, Unconjugated (bsm-41670M) at 1:100 overnight at 4°C, followed by operating according to SP Kit(Mouse)(sp-0024) instructions and DAB staining.



Paraformaldehyde-fixed, paraffin embedded (human prostate); Antigen retrieval by boiling in sodium citrate buffer (pH6.0) for 15min; Block

**Important Note:** This product as supplied is intended for research use only, not for use in human, therapeutic or diagnostic applications.

endogenous peroxidase by 3% hydrogen peroxide for 20 minutes; Blocking buffer (normal goat serum) at 37°C for 30min; Antibody incubation with (Prostate Specific Antigen) Monoclonal Antibody, Unconjugated (bsm-41670M) at 1:200 overnight at 4°C, followed by operating according to SP Kit(Mouse)(sp-0024) instructions and DAB staining.