

bsm-41668M**[Primary Antibody]**

Human Ferritin Light Chain Mouse mAb

BioSS
ANTIBODIES

www.bioss.com.cn

sales@bioss.com.cn

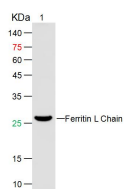
techsupport@bioss.com.cn

400-901-9800

— DATASHEET —

Host: Mouse	Isotype: IgG1	Applications: WB (1:500-2000) ELISA (1:5000-10000) Reactivity: Human Predicted MW.: 20 kDa Subcellular Location: Secreted ,Extracellular matrix ,Cytoplasm
Clonality: Monoclonal	CloneNo.: 8F6	
GeneID: 2512	SWISS: P02792	
Target: Human Ferritin Light Chain		
Immunogen: Recombinant human Ferritin Light Chain: 1-175/175.		
Purification: affinity purified by Protein A		
Storage: Size : 50ul/100ul/200ul 0.01M PBS (pH7.4). Size : 200ug (PBS only) 0.01M PBS Shipped at 4°C. Store at -20°C for one year. Avoid repeated freeze/thaw cycles.		
Background: This gene encodes the light subunit of the ferritin protein. Ferritin is the major intracellular iron storage protein in prokaryotes and eukaryotes. It is composed of 24 subunits of the heavy and light ferritin chains. Variation in ferritin subunit composition may affect the rates of iron uptake and release in different tissues. A major function of ferritin is the storage of iron in a soluble and nontoxic state. Defects in this light chain ferritin gene are associated with several neurodegenerative diseases and hyperferritinemia-cataract syndrome. This gene has multiple pseudogenes. [provided by RefSeq, Jul 2008].		

— VALIDATION IMAGES —



Sample: Lane 1: Recombinant Human Ferritin
Light Chain Protein at 500ng Primary: Mouse
Anti-Ferritin Light Chain Antibody at 1/1000
dilution (Cat. bsm-41668M) Secondary:
IRDye800CW Goat Anti-Mouse IgG at 1/20000
dilution Predicted band size: 19kD Observed
band size: 27kD