

bsm-41667M**[Primary Antibody]**

Human Ferritin Light Chain Mouse mAb

BioSS
ANTIBODIES

www.bioss.com.cn

sales@bioss.com.cn

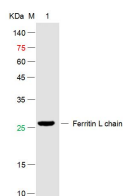
techsupport@bioss.com.cn

400-901-9800

— DATASHEET —

| | | |
|--|-----------------------|--|
| Host: Mouse | Isotype: IgG1 | Applications: WB (1:500-2000) ELISA (1:5000-10000) Reactivity: Human Predicted MW.: 20 kDa Subcellular Location: Secreted ,Extracellular matrix ,Cytoplasm |
| Clonality: Monoclonal | CloneNo.: 3F10 | |
| GeneID: 2512 | SWISS: P02792 | |
| Target: Human Ferritin Light Chain | | |
| Immunogen: Recombinant human Ferritin Light Chain: 1-175/175. | | |
| Purification: affinity purified by Protein A | | |
| Storage: Size : 100ug 0.01M PBS (pH7.4). Size : 200ug (PBS only) 0.01M PBS Shipped at 4°C. Store at -20°C for one year. Avoid repeated freeze/thaw cycles. | | |
| Background: This gene encodes the light subunit of the ferritin protein. Ferritin is the major intracellular iron storage protein in prokaryotes and eukaryotes. It is composed of 24 subunits of the heavy and light ferritin chains. Variation in ferritin subunit composition may affect the rates of iron uptake and release in different tissues. A major function of ferritin is the storage of iron in a soluble and nontoxic state. Defects in this light chain ferritin gene are associated with several neurodegenerative diseases and hyperferritinemia-cataract syndrome. This gene has multiple pseudogenes. [provided by RefSeq, Jul 2008]. | | |

— VALIDATION IMAGES —



Sample: Lane 1: Recombinant Human Ferritin Light Chain Protein at 500ng
Primary: Mouse Anti-Ferritin Light Chain Antibody at 1/1000 dilution (Cat. bsm-41667M)
Secondary: IRDye800CW Goat Anti-Mouse IgG at 1/20000 dilution
Predicted band size: 19kD
Observed band size: 27kD