

bs-15314R**[Primary Antibody]****C9orf140 Rabbit pAb****Bioss**
ANTIBODIES

www.bioss.com.cn

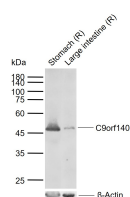
sales@bioss.com.cn

techsupport@bioss.com.cn

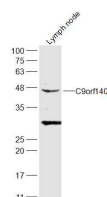
400-901-9800

— DATASHEET —

Host: Rabbit Clonality: Polyclonal GeneID: 89958 Target: C9orf140 Immunogen: KLH conjugated synthetic peptide derived from human C9orf140: 301-394/394. Purification: affinity purified by Protein A Concentration: 1mg/ml Storage: 0.01M TBS (pH7.4) with 1% BSA, 0.02% Proclin300 and 50% Glycerol. Shipped at 4°C. Store at -20°C for one year. Avoid repeated freeze/thaw cycles. Background: C9orf140 (chromosome 9 open reading frame 140), also known as TS/MDEP (tumor specificity and mitosis phase-dependent expression protein) or p42.3, is a 394 amino acid nuclear and cytoplasmic protein encoded by a gene that maps to human chromosome 9q34.3. Chromosome 9 consists of about 145 million bases, represents 4% of the human genome and encodes nearly 900 genes. Thought to play a role in gender determination, deletion of the distal portion of 9p can lead to development of male to female sex reversal, the phenotype of a female with a male X,Y genotype. Hereditary hemorrhagic telangiectasia, which is characterized by harmful vascular defects, is associated with the chromosome 9 gene encoding endoglin protein, ENG. Familial dysautonomia is also associated with chromosome 9 through the gene IKBKAP. Notably, chromosome 9 encompasses the largest interferon family gene cluster. Chromosome 9 is partnered with chromosome 22 in the translocation leading to the aberrant production of BCR-ABL fusion protein often found in leukemias.	Isotype: IgG SWISS: Q86UD0 Applications: WB (1:500-2000) Reactivity: Rat (predicted: Human, Mouse, Rabbit, Cow, Chicken, Horse) Predicted MW.: 43 kDa Subcellular Location: Cell membrane ,Cytoplasm ,Nucleus
--	--

— VALIDATION IMAGES —

Sample: Lane 1: Rat Stomach tissue lysates Lane 2: Rat Large intestine tissue lysates
Primary: Anti-C9orf140 (bs-15314R) at 1/1000 dilution
Secondary: IRDye800CW Goat Anti-Rabbit IgG at 1/20000 dilution
Predicted band size: 43 kDa
Observed band size: 47 kDa



Sample: Lymph node (Rat) Lysate at 40 ug
Primary: Anti-C9orf140 (bs-15314R) at 1/300 dilution
Secondary: IRDye800CW Goat Anti-Rabbit IgG at 1/20000 dilution
Predicted band size: 43 kD
Observed band size: 43 kD