

---

## VEGFA/VEGF165 Mouse mAb

Catalog Number: bsm-41661M

Target Protein: VEGFA/VEGF165

Form: Size : 100ug

Liquid

Size : 200ug (PBS only)

Lyophilized

Note: Centrifuge tubes before opening. Reconstitute the lyophilized product in distilled water. Optimal concentration should be determined by the end user.

Host: Mouse

Clonality: Monoclonal

Clone No.: 14C3

Isotype: IgG1

Applications: WB (1:500-2000), ELISA (1:5000-10000)

Reactivity: Human

Predicted MW: 18 kDa

Entrez Gene: 7422

Swiss Prot: P15692

Source: Recombinant human VEGF165 Protein: 27-191/191.

Purification: affinity purified by Protein A

Storage: Size : 100ug

0.01M PBS (pH7.4).

Size : 200ug (PBS only)

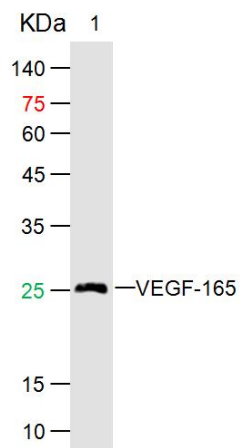
0.01M PBS

Shipped at 4°C. Store at -20°C for one year. Avoid repeated freeze/thaw cycles.

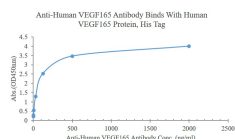
**Background:** Vascular endothelial growth factor (VEGF), originally known as vascular permeability factor (VPF), is a signal protein produced by cells that stimulates the formation of blood vessels. To be specific, VEGF is a sub-family of growth factors, the platelet-derived growth factor family of cystine-knot growth factors. They are important signaling proteins involved in both vasculogenesis (the de novo formation of the embryonic circulatory system) and angiogenesis (the growth of blood vessels from pre-existing vasculature).

### VALIDATION IMAGES

---



Sample: Lane 1: Recombinant Human VEGF165 Protein at 500ng Primary: Mouse Anti-VEGF165 Monoclonal Antibody at 1/1000 dilution (Cat.bsm-41661M) Secondary: IRDye800CW Goat Anti-Mouse IgG at 1/20000 dilution Predicted band size: 21kD Observed band size: 25kD



Measured by its binding ability in a indirect ELISA. Immobilized Human VEGF165, His Tag (Cat. bs-41613P) at 2 µg/mL (100 µL/well) can bind Anti-Human VEGF165 monoclonal antibody, the minimum detection concentration is 1ng/mL