

bsm-43005M**[Primary Antibody]****Interleukin-1 receptor-like 1/ST2 Mouse mAb****BioSS**
ANTIBODIES

www.bioss.com.cn

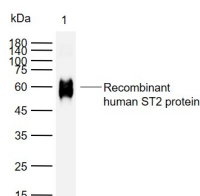
sales@bioss.com.cn

techsupport@bioss.com.cn

400-901-9800

— DATASHEET —

Host: Mouse	Isotype: IgG	Applications: WB (1:500-2000) Reactivity: Human Predicted MW.: 61 kDa Subcellular Location: Secreted ,Cell membrane
Clonality: Monoclonal	CloneNo.: 2B12	
GeneID: 9173	SWISS: Q01638	
Target: Interleukin-1 receptor-like 1/ST2		
Immunogen: Recombinant human human Interleukin-1 receptor-like 1/ST2 protein: 19-328/369.		
Purification: affinity purified by Protein A		
Storage: Size : 50ul/100ul/200ul 0.01M PBS (pH7.4). Size : 200ug (PBS only) 0.01M PBS Shipped at 4°C. Store at -20°C for one year. Avoid repeated freeze/thaw cycles.		
Background: ST2 is a member of a superfamily containing the Interleukin 1 (IL1) receptor and the Toll-like receptors (TLRs). The TLRs are signaling molecules that recognize different microbial products during infection and serve as an important link between the innate and adaptive immune responses. ST2 was originally identified as a protein whose production was stimulated by various proliferation-inducing agents such as PDGF and FGF. More recently, it has been shown to negatively regulate IL1 receptor and Toll-like receptor 4 (TLR4) signaling and to maintain endotoxin tolerance. It has been suggested that the inhibition of TLR4 signaling occurs through the association and sequestering of TLR adaptor molecules such as MyD88 and TIRAP.		

— VALIDATION IMAGES —

Sample: Lane 1: Recombinant human ST2 protein, His (HEK293) Primary: Anti-Interleukin-1 receptor-like 1/ST2 (bsm-43005M) at 1/1000 dilution Secondary: IRDye800CW Goat Anti-Mouse IgG at 1/20000 dilution Predicted band size: 61 kDa Observed band size: 61 kDa