

bs-14461R**[Primary Antibody]****DUSP9 Rabbit pAb****Bioss**
ANTIBODIES

www.bioss.com.cn

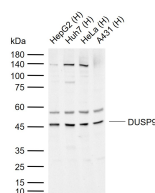
sales@bioss.com.cn

techsupport@bioss.com.cn

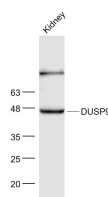
400-901-9800

— DATASHEET —

Host: Rabbit Clonality: Polyclonal GeneID: 1852 Target: DUSP9 Immunogen: KLH conjugated synthetic peptide derived from human DUSP9: 301-384/384. Purification: affinity purified by Protein A Concentration: 1mg/ml Storage: 0.01M TBS (pH7.4) with 1% BSA, 0.02% Proclin300 and 50% Glycerol. Shipped at 4°C. Store at -20°C for one year. Avoid repeated freeze/thaw cycles. Background: The protein encoded by this gene is a member of the dual specificity protein phosphatase subfamily. These phosphatases inactivate their target kinases by dephosphorylating both the phosphoserine/threonine and phosphotyrosine residues. They negatively regulate members of the mitogen-activated protein (MAP) kinase superfamily (MAPK/ERK, SAPK/JNK, p38), which is associated with cellular proliferation and differentiation. Different members of the family of dual specificity phosphatases show distinct substrate specificities for various MAP kinases, different tissue distribution and subcellular localization, and different modes of inducibility of their expression by extracellular stimuli. This gene product shows selectivity for members of the ERK family of MAP kinases, is expressed only in placenta, kidney, and fetal liver, and is localized to the cytoplasm and nucleus. [provided by RefSeq, Jul 2008]	Isotype: IgG SWISS: Q99956 Applications: WB (1:500-2000) Reactivity: Human, Mouse (predicted: Rat, Sheep, Cow, Dog, Horse) Predicted MW.: 42 kDa Subcellular Location: Cytoplasm
--	--

— VALIDATION IMAGES —

Sample: Lane 1: Human HepG2 cell lysates Lane 2: Human Huh7 cell lysates Lane 3: Human HeLa cell lysates Lane 4: Human A431 cell lysates
Primary: Anti-DUSP9 (bs-14461R) at 1/1000 dilution Secondary: IRDye800CW Goat Anti-Rabbit IgG at 1/20000 dilution Predicted band size: 42 kDa Observed band size: 46 kDa



Sample: Kidney (Mouse) Lysate at 40 ug Primary: Anti- DUSP9 (bs-14461R) at 1/300 dilution
Secondary: IRDye800CW Goat Anti-Rabbit IgG at 1/20000 dilution Predicted band size: 42 kD
Observed band size: 45 kD