

bs-14459R**[Primary Antibody]****DUSP26 Rabbit pAb****BioSS**
ANTIBODIES

www.bioss.com.cn

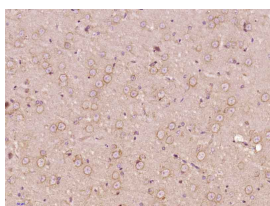
sales@bioss.com.cn

techsupport@bioss.com.cn

400-901-9800

— DATASHEET —

Host: Rabbit	Isotype: IgG	Applications: IHC-P (1:100-500) IHC-F (1:100-500) IF (1:100-500)
Clonality: Polyclonal		
GeneID: 78986	SWISS: Q9BV47	
Target: DUSP26		Reactivity: Rat (predicted: Human, Mouse, Rabbit, Pig, Cow, Horse, Gorilla, Opossum, Marmoset (common), Orangutan)
Immunogen: KLH conjugated synthetic peptide derived from human DUSP26: 111-211/211.		
Purification: affinity purified by Protein A		Predicted MW.: 24 kDa
Concentration: 1mg/ml		Subcellular Location: Cytoplasm ,Nucleus
Storage: 0.01M TBS (pH7.4) with 1% BSA, 0.02% Proclin300 and 50% Glycerol. Shipped at 4°C. Store at -20°C for one year. Avoid repeated freeze/thaw cycles.		
Background: Mitogen-activated protein (MAP) kinases are a large class of proteins involved in signal transduction pathways, which are activated by a range of stimuli and mediate a number of physiological and pathological changes in the cell. Dual specificity phosphatases (DUSPs) are a subclass of the protein tyrosine phosphatase (PTP) gene superfamily, which are selective for dephosphorylating critical phosphothreonine and phosphotyrosine residues within MAP kinases. DUSP gene expression is induced by a host of growth factors and/or cellular stresses, thereby negatively regulating MAP kinase superfamily members including MAPK/ERK, SAPK/JNK and p38. DUSP26, also designated LDP4, MKP8, NATA1 and SKRP3, is ubiquitously expressed in brain except in the hippocampus. DUSP26 dephosphorylates p38 thereby inhibiting p38-mediated apoptosis in anaplastic thyroid cancer cells. Downregulation of DUSP26 may also contribute to malignant phenotypes of glioma.		

— VALIDATION IMAGES —

Paraformaldehyde-fixed, paraffin embedded (Rat brain); Antigen retrieval by boiling in sodium citrate buffer (pH6.0) for 15min; Block endogenous peroxidase by 3% hydrogen peroxide for 20 minutes; Blocking buffer (normal goat serum) at 37°C for 30min; Antibody incubation with (DUSP26) Polyclonal Antibody, Unconjugated (bs-14459R) at 1:400 overnight at 4°C, followed by operating according to SP Kit(Rabbit) (sp-0023) instructions and DAB staining.