

bs-14447R**[Primary Antibody]****DUS2L Rabbit pAb****Bioss**
ANTIBODIES

www.bioss.com.cn

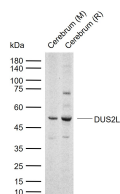
sales@bioss.com.cn

techsupport@bioss.com.cn

400-901-9800

— DATASHEET —

Host: Rabbit	Isotype: IgG	Applications: WB (1:500-2000)
Clonality: Polyclonal		Reactivity: Mouse, Rat (predicted: Human, Rabbit, Pig, Sheep, Cow, Horse)
GeneID: 54920	SWISS: Q9NX74	
Target: DUS2L		Predicted MW.: 55 kDa
Immunogen: KLH conjugated synthetic peptide derived from human DUS2L: 101-200/493.		Subcellular Location: Cytoplasm
Purification: affinity purified by Protein A		
Concentration: 1mg/ml		
Storage: 0.01M TBS (pH7.4) with 1% BSA, 0.02% Proclin300 and 50% Glycerol. Shipped at 4°C. Store at -20°C for one year. Avoid repeated freeze/thaw cycles.		
Background: This gene encodes a cytoplasmic protein that catalyzes the conversion of uridine residues to dihydrouridine in the D-loop of tRNA. The resulting modified bases confer enhanced regional flexibility to tRNA. The encoded protein may increase the rate of translation by inhibiting an interferon-induced protein kinase. This gene has been implicated in pulmonary carcinogenesis. Alternatively spliced transcript variants have been described for this gene. [provided by RefSeq, Nov 2012]		

— VALIDATION IMAGES —

Sample: Lane 1: Mouse Cerebrum tissue lysates

Lane 2: Rat Cerebrum tissue lysates Primary:

Anti-DUS2L (bs-14447R) at 1/1000 dilution

Secondary: IRDye800CW Goat Anti-Rabbit IgG at

1/20000 dilution Predicted band size: 55 kDa

Observed band size: 55 kDa