

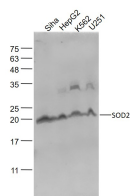
bsm-51267M**[Primary Antibody]****SOD2 Mouse mAb****Bioss**
ANTIBODIES

www.bioss.com.cn

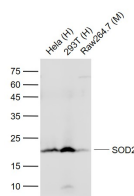
sales@bioss.com.cn

techsupport@bioss.com.cn

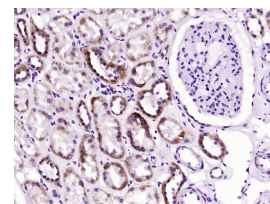
400-901-9800

— DATASHEET —**Host:** Mouse**Clonality:** Monoclonal**GeneID:** 6648**Target:** SOD2**Purification:** affinity purified by Protein G**Concentration:** 1mg/ml**Storage:** 0.01M TBS (pH7.4) with 1% BSA, 0.02% Proclin300 and 50% Glycerol.
Shipped at 4°C. Store at -20°C for one year. Avoid repeated freeze/thaw cycles.**Background:** This gene is a member of the iron/manganese superoxide dismutase family. It encodes a mitochondrial protein that forms a homotetramer and binds one manganese ion per subunit. This protein binds to the superoxide byproducts of oxidative phosphorylation and converts them to hydrogen peroxide and diatomic oxygen. Mutations in this gene have been associated with idiopathic cardiomyopathy (IDC), premature aging, sporadic motor neuron disease, and cancer. Alternate transcriptional splice variants, encoding different isoforms, have been characterized. [provided by RefSeq, Jul 2008]**Isotype:** IgG1, k**CloneNo.:** 6C11**SWISS:** P04179**Applications:** WB (1:200-1000)**IHC-P** (1:100-500)**IHC-F** (1:100-500)**IF** (1:20-200)**Reactivity:** Human, Mouse**Predicted**
MW.: 22 kDa**Subcellular**
Location: Cytoplasm**— VALIDATION IMAGES —**

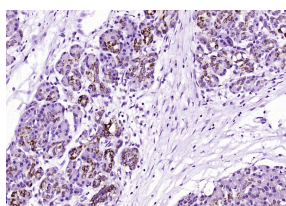
Sample: SiHa(Human) Cell Lysate at 30 ug
 HepG2(Human) Cell Lysate at 30 ug
 K562(Human) Cell Lysate at 30 ug U251(Human)
 Cell Lysate at 30 ug Primary: Anti-SOD2
 (bsm-51267M) at 1/1000 dilution Secondary:
 IRDye800CW Goat Anti-Mouse IgG at 1/20000
 dilution Predicted band size: 22 kD Observed
 band size: 22 kD



Sample: Lane 1: HeLa (Human) Cell Lysate at 30
 ug Lane 2: 293T (Human) Cell Lysate at 30 ug
 Lane 3: Raw264.7 (Mouse) Cell Lysate at 30 ug
 Primary: Anti-SOD2 (bsm-51267M) at 1/1000
 dilution Secondary: IRDye800CW Goat Anti-
 Mouse IgG at 1/20000 dilution Predicted band
 size: 22 kD Observed band size: 22 kD



Paraformaldehyde-fixed, paraffin embedded
 (Human kidney); Antigen retrieval by boiling in
 sodium citrate buffer (pH6.0) for 15min; Block
 endogenous peroxidase by 3% hydrogen
 peroxide for 20 minutes; Blocking buffer (normal
 goat serum) at 37°C for 30min; Antibody
 incubation with (SOD2) Monoclonal Antibody,
 Unconjugated (bsm-51267M) at 1:400 overnight
 at 4°C, followed by operating according to SP
 Kit(Mouse) (sp-0024) instructions and DAB
 staining.



Paraformaldehyde-fixed, paraffin embedded
 (Human pancreatic cancer); Antigen retrieval by
 boiling in sodium citrate buffer (pH6.0) for
 15min; Block endogenous peroxidase by 3%
 hydrogen peroxide for 20 minutes; Blocking
 buffer (normal goat serum) at 37°C for 30min;
 Antibody incubation with (SOD2) Monoclonal

Important Note: This product as supplied is intended for research use only, not for use in human, therapeutic or diagnostic applications.

Antibody, Unconjugated (bsm-51267M) at 1:400
overnight at 4°C, followed by operating
according to SP Kit(Mouse) (sp-0024)
instructions and DAB staining.