

bs-24108R**[Primary Antibody]****SAMD11 Rabbit pAb****Bioss**
ANTIBODIES

www.bioss.com.cn

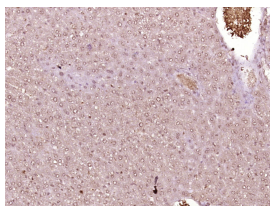
sales@bioss.com.cn

techsupport@bioss.com.cn

400-901-9800

— DATASHEET —

Host: Rabbit	Isotype: IgG	Applications: IHC-P (1:100-500) IHC-F (1:100-500) IF (1:100-500) Reactivity: Mouse (predicted: Rat) Predicted MW.: 73 kDa Subcellular Location: Nucleus
Clonality: Polyclonal		
GeneID: 231004	SWISS: Q1RNF8	
Target: SAMD11		
Immunogen: KLH conjugated synthetic peptide derived from mouse SAMD11: 461-560/681.		
Purification: affinity purified by Protein A		
Concentration: 1mg/ml		
Storage: 0.01M TBS (pH7.4) with 1% BSA, 0.02% Proclin300 and 50% Glycerol. Shipped at 4°C. Store at -20°C for one year. Avoid repeated freeze/thaw cycles.		
Background: SAMD11 (Sterile Alpha Motif Domain Containing 11) is a Protein Coding gene. GO annotations related to this gene include transcription coactivator activity and PH domain binding. An important paralog of this gene is PHC3.		

— VALIDATION IMAGES —

Paraformaldehyde-fixed, paraffin embedded (Mouse liver); Antigen retrieval by boiling in sodium citrate buffer (pH6.0) for 15min; Block endogenous peroxidase by 3% hydrogen peroxide for 20 minutes; Blocking buffer (normal goat serum) at 37°C for 30min; Antibody incubation with (SAMD11) Polyclonal Antibody, Unconjugated (bs-24108R) at 1:400 overnight at 4°C, followed by operating according to SP Kit(Rabbit) (sp-0023) instructions and DAB staining.