

SLC22A13 Rabbit pAb

Catalog Number: bs-24125R

Target Protein: SLC22A13

Concentration: 1mg/ml

Form: Liquid

Host: Rabbit

Clonality: Polyclonal

Isotype: IgG

Applications: WB (1:500-2000)

Reactivity: Mouse (predicted:Rat)

Predicted MW: 61 kDa

Entrez Gene: 102570

Swiss Prot: Q6A4L0

Source: KLH conjugated synthetic peptide derived from mouse SLC22A13: 61-160/551.

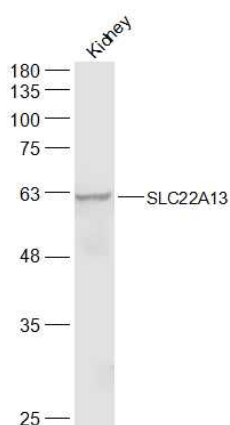
Purification: affinity purified by Protein A

Storage: 0.01M TBS (pH7.4) with 1% BSA, 0.02% Proclin300 and 50% Glycerol.

Shipped at 4°C. Store at -20°C for one year. Avoid repeated freeze/thaw cycles.

Background: This gene encodes a member of the organic-cation transporter family. It is located in a gene cluster with another member of the family, organic cation transporter like 4. The encoded protein is a transmembrane protein involved in the transport of small molecules. This protein can function to mediate urate uptake and is a high affinity nicotinate exchanger in the kidneys and the intestine. [provided by RefSeq, Sep 2008]

VALIDATION IMAGES



Sample: Kidney (Mouse) Lysate at 40 ug Primary: Anti-SLC22A13 (bs-24125R) at 1/500 dilution Secondary: IRDye800CW Goat Anti-Rabbit IgG at 1/20000 dilution Predicted band size: 61 kD Observed band size: 61 kD