

bs-23350R**[Primary Antibody]****SCLT1 Rabbit pAb****Bioss**
ANTIBODIES

www.bioss.com.cn

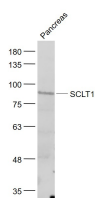
sales@bioss.com.cn

techsupport@bioss.com.cn

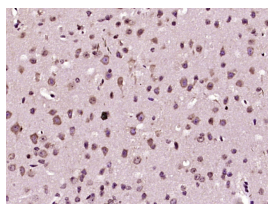
400-901-9800

— DATASHEET —

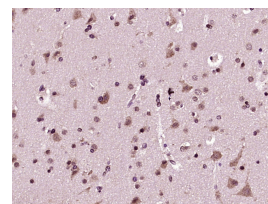
Host: Rabbit	Isotype: IgG	Applications: WB (1:500-2000) IHC-P (1:100-500) IHC-F (1:100-500) IF (1:100-500) Reactivity: Human, Mouse (predicted: Rat, Rabbit, Pig, Sheep, Cow, Dog, Horse) Predicted MW.: 81 kDa Subcellular Location: Cytoplasm
Clonality: Polyclonal		
GeneID: 132320	SWISS: Q96NL6	
Target: SCLT1		
Immunogen: KLH conjugated synthetic peptide derived from human SCLT1: 501-600/688.		
Purification: affinity purified by Protein A		
Concentration: 1mg/ml		
Storage: 0.01M TBS (pH7.4) with 1% BSA, 0.02% Proclin300 and 50% Glycerol. Shipped at 4°C. Store at -20°C for one year. Avoid repeated freeze/thaw cycles.		
Background: SCLT1 (sodium channel and clathrin linker 1), also known as CAP1A or hCAP-1A, is a 688 amino acid cytoplasmic protein that acts as a linker between the voltage-gated sodium channel, Na ⁺ CP type X? and clathrin. SCLT1 is abundantly expressed in DRG (dorsal root ganglia) neurons and colocalizes with Na ⁺ CP type X? SCLT1 regulates Na ⁺ CP type X?channel activity by promoting channel internalization. SCLT1 exists as four alternatively spliced isoforms and is encoded by a gene located on human chromosome 4, which encodes nearly 6% of the human genome and has the largest gene deserts (regions of the genome with no protein encoding genes) of all human chromosomes. Defects in some of the genes located on chromosome 4 are associated with Huntington's disease, Ellis-van Creveld syndrome, methylmalonic acidemia and polycystic kidney disease.		

— VALIDATION IMAGES —

Sample: Pancreas (Mouse) Lysate at 40 ug
Primary: Anti- SCLT1 (bs-23350R) at 1/1000
dilution Secondary: IRDye800CW Goat Anti-
Rabbit IgG at 1/20000 dilution Predicted band
size: 81 kD Observed band size: 81 kD



Paraformaldehyde-fixed, paraffin embedded
(mouse brain tissue); Antigen retrieval by boiling
in sodium citrate buffer (pH6.0) for 15min; Block
endogenous peroxidase by 3% hydrogen
peroxide for 20 minutes; Blocking buffer (normal
goat serum) at 37°C for 30min; Antibody
incubation with (SCLT1) Polyclonal Antibody,
Unconjugated (bs-23350R) at 1:400 overnight at
4°C, followed by operating according to SP
Kit(Rabbit) (sp-0023) instructionsand DAB
staining.



Paraformaldehyde-fixed, paraffin embedded
(human brain glioma); Antigen retrieval by
boiling in sodium citrate buffer (pH6.0) for
15min; Block endogenous peroxidase by 3%
hydrogen peroxide for 20 minutes; Blocking
buffer (normal goat serum) at 37°C for 30min;
Antibody incubation with (SCLT1) Polyclonal
Antibody, Unconjugated (bs-23350R) at 1:400
overnight at 4°C, followed by operating
according to SP Kit(Rabbit) (sp-0023)
instructionsand DAB staining.