

bs-24114R**[Primary Antibody]****PRSS55 Rabbit pAb****BioSS**
ANTIBODIES

www.bioss.com.cn

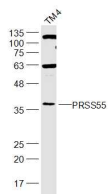
sales@bioss.com.cn

techsupport@bioss.com.cn

400-901-9800

— DATASHEET —

Host: Rabbit	Isotype: IgG	Applications: WB (1:500-2000)
Clonality: Polyclonal		Reactivity: Mouse
	SWISS: Q14BX2	
Target: PRSS55		
Immunogen: KLH conjugated synthetic peptide derived from mouse PRSS55: 151-250/352. < Extracellular >		Predicted MW.: 39 kDa
Purification: affinity purified by Protein A		Subcellular Location: Cell membrane
Concentration: 1mg/ml		
Storage: 0.01M TBS (pH7.4) with 1% BSA, 0.02% Proclin300 and 50% Glycerol. Shipped at 4°C. Store at -20°C for one year. Avoid repeated freeze/thaw cycles.		
Background: This gene encodes a member of a group of membrane-anchored chymotrypsin (S1)-like serine proteases. The encoded protein is primarily expressed in the Leydig and Sertoli cells of the testis and may be involved in male fertility. Alternate splicing results in multiple transcript variants. [provided by RefSeq, Sep 2010]		

— VALIDATION IMAGES —

Sample: TM4(Mouse) Cell Lysate at 40 ug
Primary: Anti-PRSS55 (bs-24114R) at 1/300
dilution Secondary: IRDye800CW Goat Anti-Rabbit IgG at 1/20000 dilution Predicted band size: 39 kD Observed band size: 36 kD

— SELECTED CITATIONS —

- **[IF=8.025]** Na Wang. et al. TMT-based quantitative N-glycoproteomic analysis reveals glycoprotein protection can improve the quality of frozen bovine sperm. INT J BIOL MACROMOL. 2022 Oct;218:168 WB ;Bovine. 35870621