

## PAX1 Rabbit pAb

Catalog Number: bs-25093R

Target Protein: PAX1

Concentration: 1mg/ml

Form: Liquid

Host: Rabbit

Clonality: Polyclonal

Isotype: IgG

Applications: WB (1:500-2000)

Reactivity: Human, Mouse (predicted:Rat, Rabbit, Pig, Sheep, Cow, Dog)

Predicted MW: 55 kDa

Entrez Gene: 5075

Swiss Prot: P15863

Source: KLH conjugated synthetic peptide derived from human PAX1: 181-280/534.

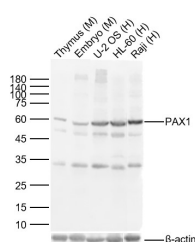
Purification: affinity purified by Protein A

Storage: 0.01M TBS (pH7.4) with 1% BSA, 0.02% Proclin300 and 50% Glycerol.

Shipped at 4°C. Store at -20°C for one year. Avoid repeated freeze/thaw cycles.

**Background:** This gene is a member of the paired box (PAX) family of transcription factors. Members of the PAX family typically contain a paired box domain and a paired-type homeodomain. These genes play critical roles during fetal development. This gene plays a role in pattern formation during embryogenesis and may be essential for development of the vertebral column. This gene is silenced by methylation in ovarian and cervical cancers and may be a tumor suppressor gene. Mutations in this gene are also associated with vertebral malformations. [provided by RefSeq, Mar 2012]

## VALIDATION IMAGES



Sample: Lane 1: Mouse Thymus Lysates Lane 2: Mouse Embryo Lysates Lane 3: Human U-2 OS cell Lysates  
Lane 4: Human HL-60 cell Lysates Lane 5: Human Raji cell Lysates Primary: Anti-PAX1 (bs-25093R) at 1/1000  
dilution Secondary: IRDye800CW Goat Anti-Rabbit IgG at 1/20000 dilution Predicted band size: 55kDa  
Observed band size: 60kDa