

## prox1 Rabbit pAb

Catalog Number: bs-25103R

Target Protein: prox1

Concentration: 1mg/ml

Form: Liquid

Host: Rabbit

Clonality: Polyclonal

Isotype: IgG

Applications: IHC-P (1:100-500), IHC-F (1:400-800), IF (1:100-500)

Reactivity: Human (predicted: Mouse, Rat, Rabbit, Pig, Sheep, Cow, Chicken, Horse)

Predicted MW: 81 kDa

Subcellular: Nucleus

Locations:

Entrez Gene: 5629

Swiss Prot: Q92786

Source: KLH conjugated synthetic peptide derived from human prox1: 301-400/737.

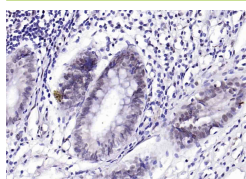
Purification: affinity purified by Protein A

Storage: 0.01M TBS (pH7.4) with 1% BSA, 0.02% Proclin300 and 50% Glycerol.

Shipped at 4°C. Store at -20°C for one year. Avoid repeated freeze/thaw cycles.

**Background:** Prox1 is a prospero-related homeobox gene. Its expression pattern suggests it has a role in a variety of embryonic tissues and may play a fundamental role in early development of the CNS. It may regulate gene expression and the development of postmitotic undifferentiated young neurons. Subcellular Location : Nucleus.

### VALIDATION IMAGES



Paraformaldehyde-fixed, paraffin embedded (human colon carcinoma); Antigen retrieval by boiling in sodium citrate buffer (pH6.0) for 15min; Block endogenous peroxidase by 3% hydrogen peroxide for 20 minutes; Blocking buffer (normal goat serum) at 37°C for 30min; Antibody incubation with (prox1) Polyclonal Antibody, Unconjugated (bs-25103R) at 1:200 overnight at 4°C, followed by operating according to SP Kit(Rabbit) (sp-0023) instructions and DAB staining.