

bs-24113R**[Primary Antibody]****Bioss**
ANTIBODIES

www.bioss.com.cn

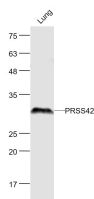
sales@bioss.com.cn

techsupport@bioss.com.cn

400-901-9800

PRSS42 Rabbit pAb**— DATASHEET —**

Host: Rabbit	Isotype: IgG	Applications: WB (1:500-2000)
Clonality: Polyclonal		Reactivity: Mouse
GeneID: 235628	SWISS: Q8VIF2	
Target: PRSS42		
Immunogen: KLH conjugated synthetic peptide derived from mouse PRSS42: 91-190/335.		Predicted MW.: 32 kDa
Purification: affinity purified by Protein A		Subcellular Location: Secreted
Concentration: 1mg/ml		
Storage: 0.01M TBS (pH7.4) with 1% BSA, 0.02% Proclin300 and 50% Glycerol. Shipped at 4°C. Store at -20°C for one year. Avoid repeated freeze/thaw cycles.		
Background: PRSS42 (Protease, Serine 42) is a Protein Coding gene. GO annotations related to this gene include serine-type endopeptidase activity. An important paralog of this gene is PRSS21.		

— VALIDATION IMAGES —

Sample: Lung (Mouse) Lysate at 40 ug Primary:

Anti- PRSS42 (bs-24113R) at 1/1000 dilution

Secondary: IRDye800CW Goat Anti-Rabbit IgG at

1/20000 dilution Predicted band size: 32 kD

Observed band size: 32 kD