

bs-23335R**[Primary Antibody]****DNase II Rabbit pAb****Bioss**
ANTIBODIES

www.bioss.com.cn

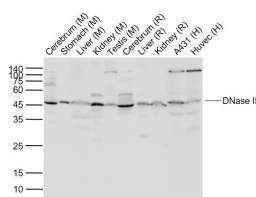
sales@bioss.com.cn

techsupport@bioss.com.cn

400-901-9800

DATASHEET**Host:** Rabbit**Isotype:** IgG**Clonality:** Polyclonal**GeneID:** 1777**SWISS:** O00115**Target:** DNase II**Immunogen:** KLH conjugated synthetic peptide derived from human DNase II: 201-300/360.**Purification:** affinity purified by Protein A**Concentration:** 1mg/ml**Storage:** 0.01M TBS (pH7.4) with 1% BSA, 0.02% Proclin300 and 50% Glycerol.

Shipped at 4°C. Store at -20°C for one year. Avoid repeated freeze/thaw cycles.

Background: Hydrolyzes DNA under acidic conditions with a preference for double-stranded DNA. Plays a major role in the degradation of nuclear DNA in cellular apoptosis during development. Necessary for proper fetal development and for definitive erythropoiesis in fetal liver, where it degrades nuclear DNA expelled from erythroid precursor cells.**Applications:** WB (1:500-2000)**Reactivity:** Human, Mouse, Rat
(predicted: Rabbit, Pig, Sheep, Cow, Dog, Horse)**Predicted MW.:** 38 kDa**Subcellular Location:** Cytoplasm**VALIDATION IMAGES**

Sample: Lane 1: Cerebrum (Mouse) Lysate at 40 ug
Lane 2: Stomach (Mouse) Lysate at 40 ug
Lane 3: Liver (Mouse) Lysate at 40 ug
Lane 4: Kidney (Mouse) Lysate at 40 ug
Lane 5: Testis (Mouse) Lysate at 40 ug
Lane 6: Cerebrum (Rat) Lysate at 40 ug
Lane 7: Liver (Rat) Lysate at 40 ug
Lane 8: Kidney (Rat) Lysate at 40 ug
Lane 9: A431 (Human) Cell Lysate at 30 ug
Lane 10: Huvec (Human) Cell Lysate at 30 ug
Primary: Anti-DNase II (bs-23335R) at 1/1000 dilution
Secondary: IRDye800CW Goat Anti-Rabbit IgG at 1/20000 dilution
Predicted band size: 38 kD
Observed band size: 45 kD

SELECTED CITATIONS

- [IF=8]** Si-Ting Chen. et al. The activation of cGAS-STING pathway causes abnormal uterine receptivity in aged mice. AGING CELL. 2024 Aug;;e14303 WB ;Mouse. 39113346