

IFN-gamma Rabbit pAb

Catalog Number: bs-41061R

Target Protein: IFN-gamma

Concentration: 1mg/ml

Form: Liquid

Host: Rabbit

Clonality: Polyclonal

Isotype: IgG

Applications: WB (1:500-2000)

Reactivity: Human, Mouse

Predicted MW: 18 kDa

Entrez Gene: 15978

Swiss Prot: P01580

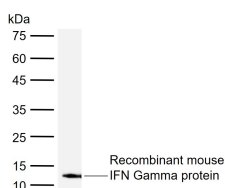
Purification: affinity purified by Protein A

Storage: 0.01M TBS (pH7.4) with 1% BSA, 0.02% Proclin300 and 50% Glycerol.

Shipped at 4°C. Store at -20°C for one year. Avoid repeated freeze/thaw cycles.

Background: Mammalian Interferon gamma is mainly produced by T lymphocytes and NK cells. It is a pleiotropic cytokine involved in the regulation of nearly all phases of immune and inflammatory responses, including the activation, growth and differentiation of T cell, B cells, macrophages, NK cells and other cell types such as endothelial cells and fibroblasts. It has weak antiviral and antiproliferative activity, and potentiates the antiviral and anti tumor effects of IFN alpha / beta (type I interferon). It is upregulated by IL2, FGF basic, EGF and downregulated by vitamin D3 or DMN. Labile at pH 2.

VALIDATION IMAGES



Sample: Lane 1: Recombinant mouse IFN Gamma protein Primary: Anti-IFN-gamma (bs-41061R) at 1/1000 dilution Secondary: IRDye800CW Goat Anti-Rabbit IgG at 1/20000 dilution Predicted band size: 18 kDa
Observed band size: 12 kDa

PRODUCT SPECIFIC PUBLICATIONS

[IF=4.1] Wenjing Lu. et al. Seasonal changes of vitamin D3 and ovarian steroidogenesis in the wild ground squirrels (*Citellus dauricus* Brandt). J STEROID BIOCHEM. 2023 Nov;234:106385 IHC ; Squirrel . 37633652

[IF=3.9] Xuanxuan Jiang. et al. Multi-omics reveals the protective effects of curcumin against AFB1-induced oxidative stress and inflammatory damage in duckling intestines. COMP BIOCHEM PHYS C. 2024 Feb;276:109815 WB ; Duck . 38061615

[IF=2.8] Chenhao Xu. et al. Human umbilical cord mesenchymal stem cells alleviate fatty liver ischemia-reperfusion injury by activating autophagy through upregulation of IFN γ . CELL BIOCHEM FUNCT. 2024 Jun;42(4):e4040 WB ; Mouse,Human . 38850132