

bsm-30073M**[Primary Antibody]****CD11b Mouse mAb****BioSS**
ANTIBODIES

www.bioss.com.cn

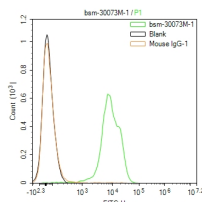
sales@bioss.com.cn

techsupport@bioss.com.cn

400-901-9800

— DATASHEET —

Host: Mouse	Isotype: Mouse IgG1, k	Applications: Flow-Cyt (1ug/Test)
Clonality: Monoclonal	CloneNo.: 11bF2	Reactivity: Human
GeneID: 3684	SWISS: P11215	
Target: CD11b		
Purification: affinity purified by Protein G		
Concentration: 1mg/ml		
Storage: 0.01M TBS (pH7.4). Shipped at 4°C. Store at -20°C for one year. Avoid repeated freeze/thaw cycles.		Predicted MW.: 125 kDa
Background: This gene encodes the integrin alpha M chain. Integrins are heterodimeric integral membrane proteins composed of an alpha chain and a beta chain. This I-domain containing alpha integrin combines with the beta 2 chain (ITGB2) to form a leukocyte-specific integrin referred to as macrophage receptor 1 ('Mac-1'), or inactivated-C3b (iC3b) receptor 3 ('CR3'). The alpha M beta 2 integrin is important in the adherence of neutrophils and monocytes to stimulated endothelium, and also in the phagocytosis of complement coated particles. Multiple transcript variants encoding different isoforms have been found for this gene. [provided by RefSeq, Mar 2009]		Subcellular Location: Cell membrane

— VALIDATION IMAGES —

Blank control:granulocyte. Primary Antibody (green line): Mouse Anti-CD11b antibody (bsm-30073M) Dilution: 1ug/Test; Secondary Antibody (white blue line) : Goat anti-mouse IgG-FITC Dilution: 0.5ug/Test. Isotype control (orange line) : Normal Mouse IgG Protocol

The cells were incubated in 5%BSA to block non-specific protein-protein interactions for 30 min at room temperature. Cells stained with Primary Antibody for 30 min at room temperature. The secondary antibody used for 40 min at room temperature. Acquisition of 20,000 events was performed.