

bsm-52821R**[Primary Antibody]**

www.bioss.com.cn

sales@bioss.com.cn

techsupport@bioss.com.cn

400-901-9800

ABCG2 Recombinant Rabbit mAb**— DATASHEET —****Host:** Rabbit**Isotype:** IgG**Clonality:** Recombinant**CloneNo.:** 4C4**GeneID:** 9429**SWISS:** Q9UNQ0**Target:** ABCG2**Immunogen:** A synthesized peptide derived from human ABCG2: 150-200/655.**Purification:** affinity purified by Protein A**Concentration:** 1mg/ml

Storage: 0.01M TBS (pH7.4) with 1% BSA, 0.02% Proclin300 and 50% Glycerol.
Shipped at 4°C. Store at -20°C for one year. Avoid repeated freeze/thaw cycles.

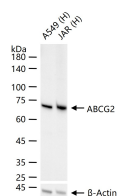
Background: An ABC transporter. Allows efflux of Hoechst dye, a property that has been used to separate bone marrow side population cells, which express BCRP/ABCG2. Appears to play a major role in the multidrug resistance phenotype of a specific MCF-7 breast cancer cell line. When overexpressed, the transfected cells become resistant to mitoxantrone, daunorubicin and doxorubicin, display diminished intracellular accumulation of daunorubicin, and manifest an ATP-dependent increase in the efflux of rhodamine 123.
Breast Cancer Resistance Protein (BCRP) is a 70 kDa ATP-Binding Cassette membrane transport protein involved in multidrug resistance. BCRP may be over-expressed in cancer cell lines selected with doxorubicin / verapamil, topotecan or mitoxantrone.

Applications: **WB** (1:500-2000)
IHC-P (1:100-500)
IHC-F (1:100-500)
IF (1:100-500)

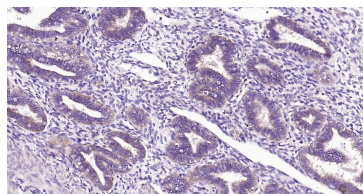
Reactivity: Human

Predicted
MW.: 72 kDa

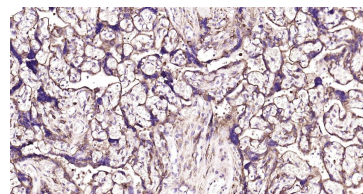
Subcellular
Location: Cell membrane

— VALIDATION IMAGES —

25 ug total protein per lane of various lysates (see on figure) probed with ABCG2 monoclonal antibody, unconjugated (bsm-52821R) at 1:2000 dilution and 4°C overnight incubation. Followed by conjugated secondary antibody incubation at r.t. for 60 min.



Paraformaldehyde-fixed, paraffin embedded Human Uterus; Antigen retrieval by boiling in sodium citrate buffer (pH6.0) for 15 min; Antibody incubation with ABCG2 Monoclonal Antibody, Unconjugated(bsm-52821R) at 1:200 overnight at 4°C, followed by conjugation to the bs-0295G-HRP and DAB (C-0010) staining.



Paraformaldehyde-fixed, paraffin embedded Human Placenta; Antigen retrieval by boiling in sodium citrate buffer (pH6.0) for 15 min; Antibody incubation with ABCG2 Monoclonal Antibody, Unconjugated(bsm-52821R) at 1:200 overnight at 4°C, followed by conjugation to the bs-0295G-HRP and DAB (C-0010) staining.