

bs-25598R**[Primary Antibody]****GOLGA1 Rabbit pAb****BioSS**
ANTIBODIES

www.bioss.com.cn

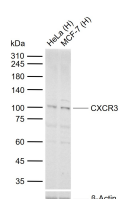
sales@bioss.com.cn

techsupport@bioss.com.cn

400-901-9800

— DATASHEET —

Host: Rabbit Clonality: Polyclonal GeneID: 2800 Target: GOLGA1 Immunogen: KLH conjugated synthetic peptide derived from human GOLGA1: 611-710/767. Purification: affinity purified by Protein A Concentration: 1mg/ml Storage: 0.01M TBS (pH7.4) with 1% BSA, 0.02% Proclin300 and 50% Glycerol. Shipped at 4°C. Store at -20°C for one year. Avoid repeated freeze/thaw cycles. Background: The GRIP family member, golgin 97, is a trans-Golgi network peripheral membrane protein with an extensive coiled-coil structure (67% alpha-helical content) and a C-terminal GRIP domain. Golgin 97 localizes exclusively on the cytoplasmic face of the Golgi and can form homodimers. Binding of golgin 97 to the Golgi membrane is mediated by the G protein family member, Arl1. Golgin 97 acts as an essential player to the cell in the form of a tethering molecule associating with tubulovesicular carriers during the trafficking from the trans-Golgi network to the recycling endosome and/or early endosome. During poxvirus infection, golgin 97 accumulates at the site of viral replication and is incorporated into virions. It associates with the insoluble fraction of the virus core protein, playing a significant role in virus replication and maturation of the virus membrane and core protein. Golgin 97 takes on a rod-like shape and, although it seemingly lacks a transmembrane domain, it protrudes from the surface of the virion envelope.	Isotype: IgG SWISS: Q92805 Applications: WB (1:500-2000) Reactivity: Human (predicted: Mouse, Rat, Pig, Cow, Dog, Horse) Subcellular Location: Cell membrane ,Cytoplasm
---	--

— VALIDATION IMAGES —

Sample: Lane 1: Human HeLa cell lysates Lane 2:
 Human MCF-7 cell lysates Primary: Anti-CXCR3
 (bs-25598R) at 1/1000 dilution Secondary:
 IRDye800CW Goat Anti-Rabbit IgG at 1/20000
 dilution Predicted band size: kDa Observed band
 size: 100 kDa