

bs-16461R**[Primary Antibody]****ZNF780A Rabbit pAb****Bioss**
ANTIBODIES

www.bioss.com.cn

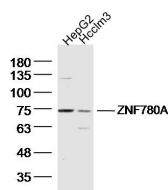
sales@bioss.com.cn

techsupport@bioss.com.cn

400-901-9800

— DATASHEET —

Host: Rabbit	Isotype: IgG	Applications: WB (1:500-2000)
Clonality: Polyclonal		Reactivity: Human
GeneID: 284323	SWISS: O75290	
Target: ZNF780A		
Immunogen: KLH conjugated synthetic peptide derived from human ZNF780A: 51-150/641.		Predicted MW.: 75 kDa
Purification: affinity purified by Protein A		Subcellular Location: Nucleus
Concentration: 1mg/ml		
Storage: 0.01M TBS (pH7.4) with 1% BSA, 0.02% Proclin300 and 50% Glycerol. Shipped at 4°C. Store at -20°C for one year. Avoid repeated freeze/thaw cycles.		

— VALIDATION IMAGES —

Sample: HepG2 Cell (Human) Lysate at 40 ug
Hccm3 Cell (Human) Lysate at 40 ug Primary:
Anti- ZNF780A (bs-16461R) at 1/300 dilution
Secondary: IRDye800CW Goat Anti-Rabbit IgG at
1/20000 dilution Predicted band size: 71 kD
Observed band size: 74 kD