

**bs-16429R****[ Primary Antibody ]****ZNF92 Rabbit pAb****BioSS**  
**ANTIBODIES**

www.bioss.com.cn

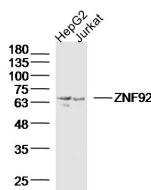
sales@bioss.com.cn

techsupport@bioss.com.cn

400-901-9800

**— DATASHEET —**

<b>Host:</b> Rabbit	<b>Isotype:</b> IgG	<b>Applications:</b> WB (1:500-2000)
<b>Clonality:</b> Polyclonal		<b>Reactivity:</b> Human
<b>GeneID:</b> 168374	<b>SWISS:</b> Q03936	
<b>Target:</b> ZNF92		
<b>Immunogen:</b> KLH conjugated synthetic peptide derived from human ZNF92: 21-120/586.		<b>Predicted MW.:</b> 68 kDa
<b>Purification:</b> affinity purified by Protein A		<b>Subcellular Location:</b> Nucleus
<b>Concentration:</b> 1mg/ml		
<b>Storage:</b> 0.01M TBS (pH7.4) with 1% BSA, 0.02% Proclin300 and 50% Glycerol. Shipped at 4°C. Store at -20°C for one year. Avoid repeated freeze/thaw cycles.		
<b>Background:</b> Zinc finger protein 92 (ZNF92) is a 586 amino acid member of the Krüppel C2H2-type zinc finger protein family. Localized to the nucleus, ZNF92 contains 16 C2H2-type zinc fingers and one KRAB domain through which it is thought to be involved in DNA-binding and transcriptional regulation. Three isoforms of ZNF92 exist as a result of alternative splicing events.		

**— VALIDATION IMAGES —**

Sample: HepG2 Cell (Human) Lysate at 40 ug

Jurkat Cell (Human) Lysate at 40 ug Primary:

Anti-ZNF92 (bs-16429R) at 1/300 dilution

Secondary: IRDye800CW Goat Anti-Rabbit IgG at

1/20000 dilution Predicted band size: 68 kD

Observed band size: 68 kD