

bs-7530R**[Primary Antibody]****BioSS**
ANTIBODIES

www.bioss.com.cn

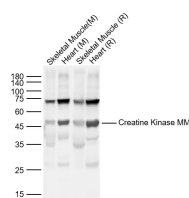
sales@bioss.com.cn

techsupport@bioss.com.cn

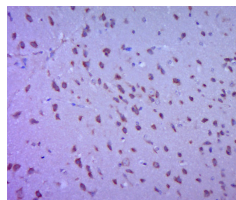
400-901-9800

Creatine Kinase MM Rabbit pAb**— DATASHEET —**

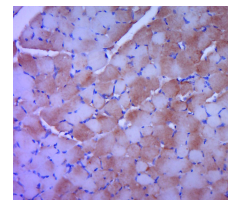
Host: Rabbit	Isotype: IgG	Applications: WB (1:500-2000) IHC-P (1:100-500) IHC-F (1:100-500) IF (1:100-500) Reactivity: Mouse, Rat (predicted: Human, Rabbit, Pig, Cow, Zebrafish, Dog, Horse) Predicted MW.: 43 kDa Subcellular Location: Cytoplasm
Clonality: Polyclonal		
GeneID: 1158	SWISS: P06732	
Target: Creatine Kinase MM		
Immunogen: KLH conjugated synthetic peptide derived from human Creatine Kinase MM: 221-330/381.		
Purification: affinity purified by Protein A		
Concentration: 1mg/ml		
Storage: 0.01M TBS (pH7.4) with 1% BSA, 0.02% Proclin300 and 50% Glycerol. Shipped at 4°C. Store at -20°C for one year. Avoid repeated freeze/thaw cycles.		
Background: The protein encoded by this gene is a cytoplasmic enzyme involved in energy homeostasis and is an important serum marker for myocardial infarction. The encoded protein reversibly catalyzes the transfer of phosphate between ATP and various phosphogens such as creatine phosphate. It acts as a homodimer in striated muscle as well as in other tissues, and as a heterodimer with a similar brain isozyme in heart. The encoded protein is a member of the ATP:guanido phosphotransferase protein family. [provided by RefSeq, Jul 2008].		

— VALIDATION IMAGES —

Sample: Lane 1: Mouse Skeletal Muscle Lysates
Lane 2: Mouse Heart Lysates Lane 3: Rat Skeletal Muscle Lysates Lane 4: Rat Heart Lysates
Primary: Anti-Creatine Kinase MM (bs-7530R) at 1/1000 dilution Secondary: IRDye800CW Goat Anti-Rabbit IgG at 1/20000 dilution Predicted band size: 43kDa Observed band size: 50kDa



Paraformaldehyde-fixed, paraffin embedded (mouse brain tissue); Antigen retrieval by boiling in sodium citrate buffer (pH6.0) for 15min; Block endogenous peroxidase by 3% hydrogen peroxide for 20 minutes; Blocking buffer (normal goat serum) at 37°C for 30min; Antibody incubation with (Creatine Kinase MM) Polyclonal Antibody, Unconjugated (bs-7530R) at 1:400 overnight at 4°C, followed by a conjugated secondary (sp-0023) for 20 minutes and DAB staining.



Paraformaldehyde-fixed, paraffin embedded (rat skeletal muscle); Antigen retrieval by boiling in sodium citrate buffer (pH6.0) for 15min; Block endogenous peroxidase by 3% hydrogen peroxide for 20 minutes; Blocking buffer (normal goat serum) at 37°C for 30min; Antibody incubation with (Creatine Kinase MM) Polyclonal Antibody, Unconjugated (bs-7530R) at 1:400 overnight at 4°C, followed by a conjugated secondary (sp-0023) for 20 minutes and DAB staining.

— SELECTED CITATIONS —

- **[IF=2.25]** Rueda, Elda M., et al. "The cellular and compartmental profile of mouse retinal glycolysis, tricarboxylic acid cycle, oxidative phosphorylation, and~ P transferring kinases." Molecular Vision 22 (2016):847-885 . IHC ;="Mouse". 27499608