

**bs-12795R****[ Primary Antibody ]****ZNF185 Rabbit pAb****BioSS**  
**ANTIBODIES**

www.bioss.com.cn

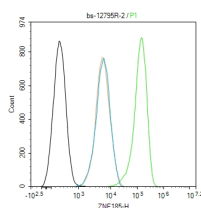
sales@bioss.com.cn

techsupport@bioss.com.cn

400-901-9800

**DATASHEET**

<b>Host:</b> Rabbit	<b>Isotype:</b> IgG	<b>Applications:</b> Flow-Cyt (2ug/Test)
<b>Clonality:</b> Polyclonal		<b>Reactivity:</b> Human (predicted: Mouse, Rat, Sheep, Cow, Horse)
<b>GeneID:</b> 7739	<b>SWISS:</b> O15231	
<b>Target:</b> ZNF185		<b>Predicted MW.:</b> 74 kDa
<b>Immunogen:</b> KLH conjugated synthetic peptide derived from human ZNF185: 101-200/689.		<b>Subcellular Location:</b> Cell membrane ,Cytoplasm
<b>Purification:</b> affinity purified by Protein A		
<b>Concentration:</b> 1mg/ml		
<b>Storage:</b> 0.01M TBS (pH7.4) with 1% BSA, 0.02% Proclin300 and 50% Glycerol. Shipped at 4°C. Store at -20°C for one year. Avoid repeated freeze/thaw cycles.		
<b>Background:</b> ZNF185 encodes a LIM domain zinc finger protein. It may be involved in the regulation of cellular proliferation and/or differentiation.		

**VALIDATION IMAGES**

Blank control (black line) :HeLa. Primary Antibody (green line): Rabbit Anti-ZNF185 antibody (bs-12795R) Dilution:2ug/Test; Secondary Antibody (white blue line) : Goat anti-rabbit IgG-AF488 Dilution: 0.5ug/Test. Isotype control (orange line) : Normal Rabbit IgG Protocol The cells were fixed with 4% PFA (10min at room temperature)and then permeabilized with 90% ice-cold methanol for 20 min at -20°C, The cells were then incubated in 5%BSA to block non-specific protein-protein interactions for 30 min at room temperature .Cells stained with Primary Antibody for 30 min at room temperature. The secondary antibody used for 40 min at room temperature. Acquisition of 20,000 events was performed.