

---

## ZNF161 Rabbit pAb

Catalog Number: bs-12791R

Target Protein: ZNF161

Concentration: 1mg/ml

Form: Liquid

Host: Rabbit

Clonality: Polyclonal

Isotype: IgG

Applications: WB (1:500-2000)

Reactivity: Human (predicted:Mouse, Rat, Rabbit, Pig, Sheep, Cow, Chicken, Dog, Horse)

Predicted MW: 57 kDa

Subcellular Nucleus

Locations:

Entrez Gene: 7716

Swiss Prot: Q14119

Source: KLH conjugated synthetic peptide derived from human ZNF161: 181-280/521.

Purification: affinity purified by Protein A

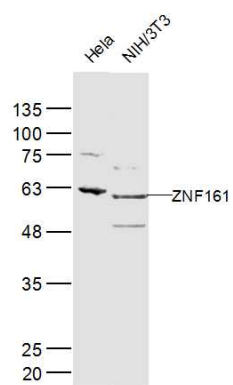
Storage: 0.01M TBS (pH7.4) with 1% BSA, 0.02% Proclin300 and 50% Glycerol.

Shipped at 4°C. Store at -20°C for one year. Avoid repeated freeze/thaw cycles.

**Background:** Transcriptional regulatory proteins containing tandemly repeated zinc finger domains are thought to be involved in both normal and abnormal cellular proliferation and differentiation. ZNF161 is a C2H2-type zinc finger protein (Koyano-Nakagawa et al., 1994 [PubMed 8035792]). See MIM 603971 for general information on zinc finger proteins.[supplied by OMIM, Sep 2008]

### VALIDATION IMAGES

---



Sample: HeLa(Human) Cell Lysate at 40 ug NIH/3T3(Human) Cell Lysate at 40 ug Primary: Anti-ZNF161 (bs-12791R) at 1/300 dilution Secondary: IRDye800CW Goat Anti-Rabbit IgG at 1/20000 dilution Predicted band size: 57 kD Observed band size: 57 kD