

bs-4470R**[Primary Antibody]****Zona pellucida glycoprotein 4 Rabbit pAb****BioSS**
ANTIBODIES

www.bioss.com.cn

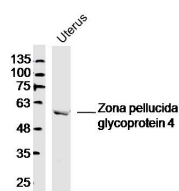
sales@bioss.com.cn

techsupport@bioss.com.cn

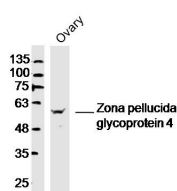
400-901-9800

— DATASHEET —

Host: Rabbit Clonality: Polyclonal GeneID: 57829 Target: Zona pellucida glycoprotein 4 Immunogen: KLH conjugated synthetic peptide derived from human ZP4: 301-400/540. Purification: affinity purified by Protein A Concentration: 1mg/ml Storage: 0.01M TBS (pH7.4) with 1% BSA, 0.02% Proclin300 and 50% Glycerol. Shipped at 4°C. Store at -20°C for one year. Avoid repeated freeze/thaw cycles. Background: The zona pellucida is an extracellular matrix that surrounds the oocyte and early embryo. It is composed primarily of three or four glycoproteins with various functions during fertilization and preimplantation development. The nascent protein contains a N-terminal signal peptide sequence, a conserved ZP domain, a consensus furin cleavage site, and a C-terminal transmembrane domain. It is hypothesized that furin cleavage results in release of the mature protein from the plasma membrane for subsequent incorporation into the zona pellucida matrix. However, the requirement for furin cleavage in this process remains controversial based on mouse studies. Previously, this gene has been referred to as ZP1 or ZPB and thought to have similar functions as mouse Zp1. However, a human gene with higher similarity and chromosomal synteny to mouse Zp1 has been assigned the symbol ZP1 and this gene has been assigned the symbol ZP4. [provided by RefSeq, Jul 2008]	Isotype: IgG SWISS: Q12836 Applications: WB (1:500-2000) Reactivity: Mouse (predicted: Human, Rat, Horse) Predicted MW.: 57 kDa Subcellular Location: Secreted ,Cell membrane
---	--

— VALIDATION IMAGES —

Sample: Uterus(Mouse)Lysate at 40 ug Primary:
Anti-Zonapellucida glycoprotein 4(bs-4470R)at
1/300 dilution Secondary: IRDye800CW Goat
Anti-RabbitIgG at 1/20000 dilution Predicted
band size: 57kD Observed band size: 57kD



Sample: Ovary (Mouse)Lysate at 40 ug Primary:
Anti-Zonapellucida glycoprotein 4(bs-4470R)at
1/300 dilution Secondary: IRDye800CW Goat
Anti-RabbitIgG at 1/20000 dilution Predicted
band size: 57kD Observed band size: 57kD