

**bs-25072R****[ Primary Antibody ]****CD20 Rabbit pAb****BioSS**  
**ANTIBODIES**

www.bioss.com.cn

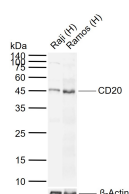
sales@bioss.com.cn

techsupport@bioss.com.cn

400-901-9800

**— DATASHEET —**

|  |                      |  |
|--|----------------------|--|
| <b>Host:</b> Rabbit  | <b>Isotype:</b> IgG  | <b>Applications:</b> WB (1:500-2000)       |
| <b>Clonality:</b> Polyclonal   |                      |  |
| <b>GeneID:</b> 931   | <b>SWISS:</b> P11836 |  |
| <b>Target:</b> CD20  |                      |  |
| <b>Immunogen:</b> KLH conjugated synthetic peptide derived from human CD20: 121-220/297.   |                      |  |
| <b>Purification:</b> affinity purified by Protein A  |                      | <b>Reactivity:</b> Human                   |
| <b>Concentration:</b> 1mg/ml   |                      |  |
| <b>Storage:</b> 0.01M TBS (pH7.4) with 1% BSA, 0.02% Proclin300 and 50% Glycerol.<br>Shipped at 4°C. Store at -20°C for one year. Avoid repeated freeze/thaw cycles.   |                      | <b>Predicted MW.:</b> 33 kDa               |
| <b>Background:</b> CD20 is a non glycosylated protein with a molecular weight of 35 or 37 kDa depending on the degree of phosphorylation. Although not a member of the tetraspanin superfamily of cell surface receptors, it crosses the cell membrane four times. The CD20 antigen is present on human pre B lymphocytes and on B lymphocytes at all stages of maturation, except on plasma cells. Low level expression of the CD20 antigen has been detected on normal T lymphocytes. The CD20 molecule is involved in regulation of B cell differentiation, presumably via its reported function as a Ca++ channel subunit. |                      | <b>Subcellular Location:</b> Cell membrane |

**— VALIDATION IMAGES —**

Sample: Lane 1: Human Raji cell lysates Lane 2: Human Ramos cell lysates  
Primary: Anti-CD20 (bs-25072R) at 1/1000 dilution  
Secondary: IRDye800CW Goat Anti-Rabbit IgG at 1/20000 dilution  
Predicted band size: 33 kDa  
Observed band size: 45 kDa