

bs-7685R**[Primary Antibody]****BioSS**
ANTIBODIES

www.bioss.com.cn

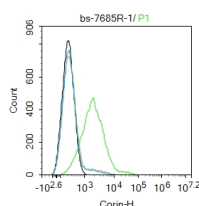
sales@bioss.com.cn

techsupport@bioss.com.cn

400-901-9800

Corin Rabbit pAb**— DATASHEET —**

Host: Rabbit Clonality: Polyclonal GeneID: 10699 Target: Corin Immunogen: KLH conjugated synthetic peptide derived from human Corin: 165-245/1042. < Extracellular > Purification: affinity purified by Protein A Concentration: 1mg/ml Storage: 0.01M TBS (pH7.4) with 1% BSA, 0.02% Proclin300 and 50% Glycerol. Shipped at 4°C. Store at -20°C for one year. Avoid repeated freeze/thaw cycles. Background: Corin was first described as a trypsin-like serine proteinase in the heart which processed pro-atrial natriuretic peptide into the active form ANP. Corin cleaves pro-ANP at Arg98/Ser-99, and blocking Corin message inhibits pro-ANP processing. Null mutant mice lacking Corin develop hypertension, and a series of missense mutations have been identified in humans with high blood pressure and hypertension. Corin is a member of the type-II transmembrane serine proteinases, such as Hepsin, Epitheliasin, Matriptase and enteropeptidase. The Corin domain structure includes a cytoplasmic domain, a transmembrane domain, a spacer region, a frizzled-like domain, 5 LDL Receptor-like domains, another frizzled-like domain, 3 more LDLR-like repeats, a SRCR (Scavenger Receptor-Cysteine Rich) domain (also called macrophage scavenger-like domain), and finally the trypsin-like serine proteinase domain. The complex domain structure puts Corin into the "mosaic" TMPRSS family, so named because of the wide variety of domains.	Isotype: IgG SWISS: Q9Y5Q5 Applications: Flow-Cyt (1ug/Test) Reactivity: Human (predicted: Mouse, Rat, Pig, Dog, Horse) Predicted MW.: 115 kDa Subcellular Location: Secreted ,Cell membrane
--	---

— VALIDATION IMAGES —

Blank control: HepG2. Primary Antibody (green line): Rabbit Anti-Corin antibody (bs-7685R)
Dilution: 1ug/Test; Secondary Antibody : Goat anti-rabbit IgG-AF488 Dilution: 0.5ug/Test.
Protocol The cells were incubated in 5%BSA to block non-specific protein-protein interactions for 30 min at room temperature .Cells stained with Primary Antibody for 30 min at room temperature. The secondary antibody used for 40 min at room temperature. Acquisition of 20,000 events was performed.

— SELECTED CITATIONS —

- **[IF=2.43]** Miyazaki et al. Increased levels of soluble corin in pre-eclampsia and fetal growth restriction. (2016) Placenta. 48:20-25 IHC ;Human. 27871468

Important Note: This product as supplied is intended for research use only, not for use in human, therapeutic or diagnostic applications.

- **[IF=0]** Sari, Agnes Rosarina Prita, et al. "Characterization of ovine dermal papilla cell aggregation." International Journal of Trichology 8.3 (2016): 121. ICC ;Sheep. 27625564