

MARCH11 Rabbit pAb

Catalog Number: bs-9345R

Target Protein: MARCH11

Concentration: 1mg/ml

Form: Liquid

Host: Rabbit

Clonality: Polyclonal

Isotype: IgG

Applications: WB (1:500-2000)

Reactivity: Human (predicted: Mouse, Rat, Sheep, Cow, Dog, Horse)

Predicted MW: 44 kDa

Entrez Gene: 441061

Swiss Prot: A6NNE9

Source: KLH conjugated synthetic peptide derived from human MARCH11: 301-400/402.

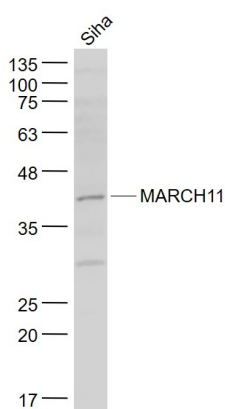
Purification: affinity purified by Protein A

Storage: 0.01M TBS (pH7.4) with 1% BSA, 0.02% Proclin300 and 50% Glycerol.

Shipped at 4°C. Store at -20°C for one year. Avoid repeated freeze/thaw cycles.

Background: E3 ubiquitin-protein ligase that mediates polyubiquitination of CD4. E3 ubiquitin ligases accept ubiquitin from an E2 ubiquitin-conjugating enzyme in the form of a thioester and then directly transfer the ubiquitin to targeted substrates. May play a role in ubiquitin-dependent protein sorting in developing spermatids.

VALIDATION IMAGES



Sample: SiHa(Human) Cell Lysate at 30 ug Primary: Anti- MARCH11 (bs-9345R) at 1/1000 dilution Secondary: IRDye800CW Goat Anti-Rabbit IgG at 1/20000 dilution Predicted band size: 44 kD Observed band size: 44 kD