

bs-15487R**[Primary Antibody]**

HIF Prolyl Hydroxylases Rabbit pAb

BioSS
ANTIBODIES

www.bioss.com.cn

sales@bioss.com.cn

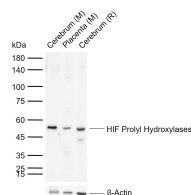
techsupport@bioss.com.cn

400-901-9800

— DATASHEET —

Host: Rabbit	Isotype: IgG	Applications: WB (1:500-2000)
Clonality: Polyclonal		Reactivity: Mouse, Rat (predicted: Human, Pig)
GeneID: 54681	SWISS: Q9NXG6	
Target: HIF Prolyl Hydroxylases		Predicted MW.: 57 kDa
Immunogen: KLH conjugated synthetic peptide derived from human HIF Prolyl Hydroxylases: 201-300/502.		Subcellular Location: Cytoplasm
Purification: affinity purified by Protein A		
Concentration: 1mg/ml		
Storage: 0.01M TBS (pH7.4) with 1% BSA, 0.02% Proclin300 and 50% Glycerol. Shipped at 4°C. Store at -20°C for one year. Avoid repeated freeze/thaw cycles.		
Background: The product of this gene belongs to the family of prolyl 4-hydroxylases. This protein is a prolyl hydroxylase that may be involved in the degradation of hypoxia-inducible transcription factors under normoxia. It plays a role in adaptation to hypoxia and may be related to cellular oxygen sensing. Alternatively spliced variants encoding different isoforms have been identified. [provided by RefSeq, Jul 2008].		

— VALIDATION IMAGES —



Sample: Lane 1: Mouse Cerebrum tissue lysates
Lane 2: Mouse Placenta tissue lysates Lane 3: Rat Cerebrum tissue lysates
Primary: Anti-HIF Prolyl Hydroxylases (bs-15487R) at 1/1000 dilution
Secondary: IRDye800CW Goat Anti-Rabbit IgG at 1/20000 dilution
Predicted band size: 57 kDa
Observed band size: 52 kDa