

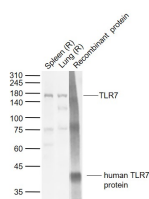
**bs-41320R****[ Primary Antibody ]****BioSS**  
**ANTIBODIES**

www.bioss.com.cn

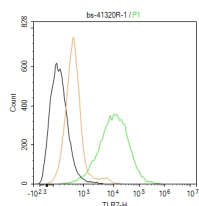
sales@bioss.com.cn

techsupport@bioss.com.cn

400-901-9800

**TLR7 Rabbit pAb****— DATASHEET —****Host:** Rabbit**Isotype:** IgG**Clonality:** Polyclonal**GeneID:** 51284**SWISS:** Q9NYK1**Target:** TLR7**Purification:** affinity purified by Protein A**Concentration:** 1mg/ml**Storage:** 0.01M TBS (pH7.4) with 1% BSA, 0.02% Proclin300 and 50% Glycerol.  
Shipped at 4°C. Store at -20°C for one year. Avoid repeated freeze/thaw cycles.**Background:** Key component of innate and adaptive immunity. TLRs (Toll-like receptors) control host immune response against pathogens through recognition of molecular patterns specific of microorganisms. TLR7 is a nucleotide-sensing TLR which is activated by single-stranded RNA. Acts via MYD88 and TRAF6, leading to NF-kappa-B activation, cytokine secretion and the inflammatory response.**Applications:** **WB** (1:500-2000)  
**Flow-Cyt** (1µg/Test)**Reactivity:** Human, Rat  
(predicted: Mouse)**Predicted**  
**MW.:** 121 kDa**Subcellular**  
**Location:** Cell membrane ,Cytoplasm**— VALIDATION IMAGES —**

Sample: Lane 1: Rat Spleen tissue lysates Lane 2: Rat Lung tissue lysates Lane 3: Recombinant human TLR7 protein (24-348/1049aa) 50ng  
Primary: Anti-TLR7 (bs-41320R) at 1/1000 dilution Secondary: IRDye800CW Goat Anti-Rabbit IgG at 1/20000 dilution Predicted band size: 121 kDa Observed band size: 165,40 kDa



The THP-1 (H) cells were incubated in 5%BSA to block non-specific protein-protein interactions (30 min at r.t.). Primary Antibody (green): Rabbit Anti-TLR7 antibody (bs-41320R): 1 µg/10<sup>6</sup> cells; Isotype Control (orange): Rabbit IgG (bs-0295P). Blank control (black): PBS. Acquisition of 20,000 events was performed.