

**bsm-33865M****[ Primary Antibody ]****Bioss**  
**ANTIBODIES**

www.bioss.com.cn

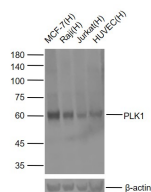
sales@bioss.com.cn

techsupport@bioss.com.cn

400-901-9800

**PLK1 Mouse mAb****— DATASHEET —**

<b>Host:</b> Mouse	<b>Isotype:</b> IgG1	<b>Applications:</b> WB (1:500-2000)  <b>Reactivity:</b> Human (predicted: Mouse, Rat)  <b>Predicted MW.:</b> 66 kDa  <b>Subcellular Location:</b> Cytoplasm ,Nucleus
<b>Clonality:</b> Monoclonal	<b>CloneNo.:</b> 6B12	
<b>GeneID:</b> 5347	<b>SWISS:</b> P53350	
<b>Target:</b> PLK1		
<b>Purification:</b> affinity purified by Protein A		
<b>Concentration:</b> 1mg/ml		
<b>Storage:</b> 0.01M TBS (pH7.4) with 1% BSA, 0.02% Proclin300 and 50% Glycerol. Shipped at 4°C. Store at -20°C for one year. Avoid repeated freeze/thaw cycles.		
<b>Background:</b> The Ser/Thr protein kinase encoded by this gene belongs to the CDC5/Polo subfamily. It is highly expressed during mitosis and elevated levels are found in many different types of cancer. Depletion of this protein in cancer cells dramatically inhibited cell proliferation and induced apoptosis; hence, it is a target for cancer therapy. [provided by RefSeq, Sep 2015]		

**— VALIDATION IMAGES —**

Sample: Lane 1: Human MCF-7 cell lysates Lane 2: Human Raji cell lysates Lane 3: Human Jurkat cell lysates Lane 4: Human HUVEC Cell Lysates  
Primary: Anti-PLK1 (bsm-33865M) at 1/1000 dilution Secondary: IRDye800CW Goat Anti-Mouse IgG at 1/20000 dilution Predicted band size: 66 kDa Observed band size: 60 kDa