

bsm-33859M**[Primary Antibody]****BioSS**
ANTIBODIES

www.bioss.com.cn

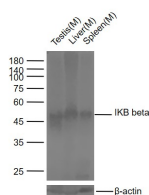
sales@bioss.com.cn

techsupport@bioss.com.cn

400-901-9800

IKB beta Mouse mAb**— DATASHEET —**

Host: Mouse	Isotype: IgG	Applications: WB (1:500-2000)
Clonality: Monoclonal	CloneNo.: 1H7	Reactivity: Mouse (predicted: Human, Rat)
GeneID: 4793	SWISS: Q15653	Predicted MW.: 38 kDa
Target: IKB beta		Subcellular Location: Cytoplasm ,Nucleus
Purification: affinity purified by Protein A		
Concentration: 1mg/ml		
Storage: 0.01M TBS (pH7.4) with 1% BSA, 0.02% Proclin300 and 50% Glycerol. Shipped at 4°C. Store at -20°C for one year. Avoid repeated freeze/thaw cycles.		
Background: The protein encoded by this gene belongs to the NF-kappa-B inhibitor family, which inhibit NF-kappa-B by complexing with, and trapping it in the cytoplasm. Phosphorylation of serine residues on these proteins by kinases marks them for destruction via the ubiquitination pathway, thereby allowing activation of the NF-kappa-B, which translocates to the nucleus to function as a transcription factor. Alternatively spliced transcript variants have been found for this gene.[provided by RefSeq, Jul 2011].		

— VALIDATION IMAGES —

Sample: Lane 1: Mouse Testis lysates Lane 2: Mouse Liver lysates Lane 3: Human Spleen lysates
Primary: Anti- IKB beta (bsm-33859M) at 1/1000 dilution
Secondary: IRDye800CW Goat Anti-Mouse IgG at 1/20000 dilution
Predicted band size: 38 kDa Observed band size: 47 kDa

— SELECTED CITATIONS —

- **[IF=7.7]** Zixuan Tang. et al. Polysaccharide of Dicliptera chinensis (L.) Juss. alleviated cholestatic liver disease by modulating the FXR pathway. INT J BIOL MACROMOL. 2024 Oct;;136393 WB ;Mouse. 39383897