

bs-9408R**[Primary Antibody]****PRR15 Rabbit pAb****Bioss**
ANTIBODIES

www.bioss.com.cn

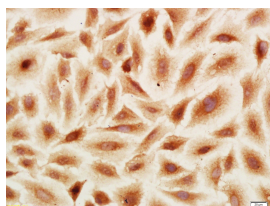
sales@bioss.com.cn

techsupport@bioss.com.cn

400-901-9800

— DATASHEET —

Host: Rabbit	Isotype: IgG	Applications: ICC/IF (1:100-500)
Clonality: Polyclonal		Reactivity: Human (predicted: Mouse, Rat, Rabbit, Pig, Sheep, Cow, Dog, Horse)
GeneID: 222171	SWISS: Q8IV56	Predicted MW.: 14 kDa
Target: PRR15		Subcellular Location: Cytoplasm ,Nucleus
Immunogen: KLH conjugated synthetic peptide derived from human PRR15: 41-129/129.		
Purification: affinity purified by Protein A		
Concentration: 1mg/ml		
Storage: 0.01M TBS (pH7.4) with 1% BSA, 0.02% Proclin300 and 50% Glycerol. Shipped at 4°C. Store at -20°C for one year. Avoid repeated freeze/thaw cycles.		
Background: May have a role in proliferation and/or differentiation.		

— VALIDATION IMAGES —

Tissue/cell: A549 cell; 4% Paraformaldehyde-fixed; Triton X-100 at room temperature for 20 min; Block endogenous peroxidase by 3% hydrogen peroxide for 20 minutes; Blocking buffer (normal goat serum) at 37°C for 30min; Antibody incubation with (PRR15) Polyclonal Antibody, Unconjugated (bs-9408R) 1:100, 90 minutes at 37°C, followed by operating according to SP Kit(Rabbit) (sp-0023) instructions and DAB staining.

— SELECTED CITATIONS —

- **[IF=2.4]** Tian Jiao. et al. Expression of proline-rich protein 15 in breast cancer and its effect on cell biological function. MACROMOL RES. 2023 Sep;1-11 WB ;Human. 10.1007/s13233-023-00198-7