

**bs-9305R****[ Primary Antibody ]****CENPO Rabbit pAb****Bioss**  
**ANTIBODIES**

www.bioss.com.cn

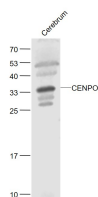
sales@bioss.com.cn

techsupport@bioss.com.cn

400-901-9800

**— DATASHEET —**

<b>Host:</b> Rabbit	<b>Isotype:</b> IgG	<b>Applications:</b> WB (1:500-2000)
<b>Clonality:</b> Polyclonal		
<b>GeneID:</b> 79172	<b>SWISS:</b> Q9BU64	
<b>Target:</b> CENPO		
<b>Immunogen:</b> KLH conjugated synthetic peptide derived from human CENPO: 101-200/300.		
<b>Purification:</b> affinity purified by Protein A		<b>Reactivity:</b> Mouse (predicted: Human, Rat, Pig, Sheep, Cow, Dog, Horse)
<b>Concentration:</b> 1mg/ml		
<b>Storage:</b> 0.01M TBS (pH7.4) with 1% BSA, 0.02% Proclin300 and 50% Glycerol. Shipped at 4°C. Store at -20°C for one year. Avoid repeated freeze/thaw cycles.		
<b>Background:</b> This gene encodes a component of the interphase centromere complex. The encoded protein is localized to the centromere throughout the cell cycle and is required for bipolar spindle assembly, chromosome segregation and checkpoint signaling during mitosis. Alternatively spliced transcript variants encoding multiple protein isoforms have been observed for this gene. [provided by RefSeq, Dec 2010]		
		<b>Predicted MW.:</b> 34 kDa
		<b>Subcellular Location:</b> Nucleus

**— VALIDATION IMAGES —**

Sample: Cerebrum (Mouse) Lysate at 40 ug  
Primary: Anti-CENPO (bs-9305R) at 1/1000  
dilution Secondary: IRDye800CW Goat Anti-  
Rabbit IgG at 1/20000 dilution Predicted band  
size: 34 kD Observed band size: 34 kD