

bs-9306R

[Primary Antibody]

CEP128 Rabbit pAb

Bioss
ANTIBODIES

www.bioss.com.cn

sales@bioss.com.cn

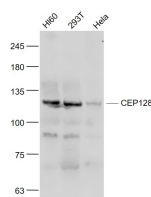
techsupport@bioss.com.cn

400-901-9800

— DATASHEET —

Host: Rabbit	Isotype: IgG	Applications: WB (1:500-2000)
Clonality: Polyclonal		
GeneID: 145508	SWISS: Q6ZU80	
Target: CEP128		
Immunogen: KLH conjugated synthetic peptide derived from human CEP128: 801-900/1094.		
Purification: affinity purified by Protein A		Reactivity: Human (predicted: Mouse, Rat, Rabbit, Pig, Sheep, Cow, Dog, Horse)
Concentration: 1mg/ml		
Storage: 0.01M TBS (pH7.4) with 1% BSA, 0.02% Proclin300 and 50% Glycerol. Shipped at 4°C. Store at -20°C for one year. Avoid repeated freeze/thaw cycles.		
Background: Phosphorylated upon DNA damage, probably by ATM or ATR.		
		Predicted MW.: 128 kDa
		Subcellular Location: Cytoplasm

— VALIDATION IMAGES —



Sample: HL60 (Human) Cell Lysate at 30 ug
293T(Human) Cell Lysate at 30 ug HeLa (Human)
Cell Lysate at 30 ug Primary: Anti- CEP128
(bs-9306R) at 1/1000 dilution Secondary:
IRDye800CW Goat Anti-Rabbit IgG at 1/20000
dilution Predicted band size: 128 kD Observed
band size: 128 kD