

bs-7523R**[Primary Antibody]****phospho-Caveolin-2 (Tyr19) Rabbit pAb****Bioss**
ANTIBODIES

www.bioss.com.cn

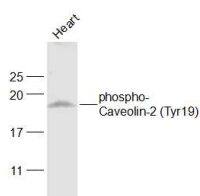
sales@bioss.com.cn

techsupport@bioss.com.cn

400-901-9800

— DATASHEET —

Host: Rabbit	Isotype: IgG	Applications: WB (1:500-2000)
Clonality: Polyclonal		Reactivity: Mouse, Rat
GeneID: 12390	SWISS: Q9WVC3	
Target: phospho-Caveolin-2 (Tyr19)		Predicted MW.: 18 kDa
Immunogen: KLH conjugated Synthesised phosphopeptide derived from mouse Caveolin2 around the phosphorylation site of Tyr19.: DA(p-Y)SH.		Subcellular Location: Cell membrane ,Cytoplasm ,Nucleus
Purification: affinity purified by Protein A		
Concentration: 1mg/ml		
Storage: 0.01M TBS (pH7.4) with 1% BSA, 0.02% Proclin300 and 50% Glycerol. Shipped at 4°C. Store at -20°C for one year. Avoid repeated freeze/thaw cycles.		
Background: Cellular localization: Nucleus. Cytoplasm. Golgi apparatus membrane. Cell membrane. Membrane > caveola. Potential hairpin-like structure in the membrane. Membrane protein of caveolae. Tyr-19-phosphorylated form is enriched at sites of cell-cell contact and is translocated to the nucleus in complex with MAPK1 in response to insulin (By similarity). Tyr-27-phosphorylated form is located both in the cytoplasm and plasma membrane. CAV1-mediated Ser-23-phosphorylated form locates to the plasma membrane. Ser-36-phosphorylated form resides in intracellular compartments.		

— VALIDATION IMAGES —

Sample: Heart (Rat) Lysate at 40 ug Primary:
Anti-phospho-Caveolin-2 (Tyr19) (bs-7523R) at
1/300 dilution Secondary: IRDye800CW Goat
Anti-Rabbit IgG at 1/20000 dilution Predicted
band size: 18 kD Observed band size: 18 kD