

**bs-6310R****[ Primary Antibody ]**

**Bioss**  
ANTIBODIES

www.bioss.com.cn

sales@bioss.com.cn

techsupport@bioss.com.cn

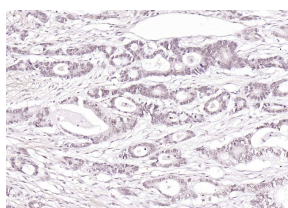
400-901-9800

## Caveolin-2 Rabbit pAb

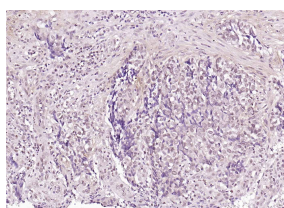
### — DATASHEET —

<b>Host:</b> Rabbit <b>Clonality:</b> Polyclonal <b>GeneID:</b> 858 <b>Target:</b> Caveolin-2 <b>Immunogen:</b> KLH conjugated synthetic peptide derived from human Caveolin-2: 41-140/162. <b>Purification:</b> affinity purified by Protein A <b>Concentration:</b> 1mg/ml <b>Storage:</b> 0.01M TBS (pH7.4) with 1% BSA, 0.02% Proclin300 and 50% Glycerol. Shipped at 4°C. Store at -20°C for one year. Avoid repeated freeze/thaw cycles. <b>Background:</b> Cellular localization: Nucleus. Cytoplasm. Golgi apparatus membrane. Cell membrane. Membrane > caveola. Potential hairpin-like structure in the membrane. Membrane protein of caveolae. Tyr-19-phosphorylated form is enriched at sites of cell-cell contact and is translocated to the nucleus in complex with MAPK1 in response to insulin (By similarity). Tyr-27-phosphorylated form is located both in the cytoplasm and plasma membrane. CAV1-mediated Ser-23-phosphorylated form locates to the plasma membrane. Ser-36-phosphorylated form resides in intracellular compartments.	<b>Isotype:</b> IgG  <b>SWISS:</b> P51636	<b>Applications:</b> IHC-P (1:100-500) IHC-F (1:100-500) IF (1:100-500) ICC/IF (1:200)  <b>Reactivity:</b> Human, Rat (predicted: Mouse)  <b>Predicted MW.:</b> 18 kDa  <b>Subcellular Location:</b> Cell membrane ,Cytoplasm ,Nucleus
--	---	--

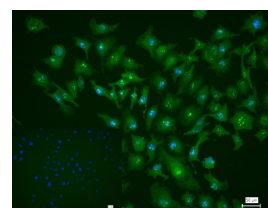
### — VALIDATION IMAGES —



Paraformaldehyde-fixed, paraffin embedded (human rectal carcinoma); Antigen retrieval by boiling in sodium citrate buffer (pH6.0) for 15min; Block endogenous peroxidase by 3% hydrogen peroxide for 20 minutes; Blocking buffer (normal goat serum) at 37°C for 30min; Incubation with (Caveolin-2) Polyclonal Antibody, Unconjugated (bs-6310R) at 1:200 overnight at 4°C, followed by operating according to SP Kit(Rabbit) (sp-0023) instructions and DAB staining.



Paraformaldehyde-fixed, paraffin embedded (Human esophageal cancer); Antigen retrieval by boiling in sodium citrate buffer (pH6.0) for 15min; Block endogenous peroxidase by 3% hydrogen peroxide for 20 minutes; Blocking buffer (normal goat serum) at 37°C for 30min; Incubation with (Caveolin-2) Polyclonal Antibody, Unconjugated (bs-6310R) at 1:200 overnight at 4°C, followed by operating according to SP Kit(Rabbit) (sp-0023) instructions and DAB staining.



4% Paraformaldehyde-fixed HUVEC (H) cell; Triton X-100 at r.t. for 20 min; Antibody incubation with (Caveolin-2) polyclonal Antibody, unconjugated (bs-6310R) 1:200, 90 min at 37°C; followed by conjugated Goat Anti-Rabbit IgG antibody (green, bs-0295G-FITC) at 37°C for 90 min, DAPI (blue, C02-04002) was used to stain the cell nuclei. PBS instead of the primary antibody was used as the blank control.

### — SELECTED CITATIONS —

- **[IF=27.7]** Jie Jiang. et al.Hepatic sphingomyelin phosphodiesterase 3promotes steatohepatitis by disrupting membranesphingolipid metabolism.Cell Metabolism.2025 Feb 20:S1550-4131(25)00016-6. Western blot ;Mouse. 40015281