

bs-9763R**[Primary Antibody]****BCL7C Rabbit pAb****BioSS**
ANTIBODIES

www.bioss.com.cn

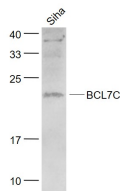
sales@bioss.com.cn

techsupport@bioss.com.cn

400-901-9800

— DATASHEET —

Host: Rabbit	Isotype: IgG	Applications: WB (1:500-2000)
Clonality: Polyclonal		
GeneID: 9274	SWISS: Q8WUZ0	
Target: BCL7C		
Immunogen: KLH conjugated synthetic peptide derived from human BCL7C: 9-100/217.		
Purification: affinity purified by Protein A		Reactivity: Human (predicted: Mouse, Rat, Pig, Cow, Chicken, Dog)
Concentration: 1mg/ml		Predicted MW.: 23 kDa
Storage: 0.01M TBS (pH7.4) with 1% BSA, 0.02% Proclin300 and 50% Glycerol. Shipped at 4°C. Store at -20°C for one year. Avoid repeated freeze/thaw cycles.		Subcellular Location: Cytoplasm ,Nucleus
Background: This gene is identified by the similarity of its product to the N-terminal region of BCL7A protein. The BCL7A protein is encoded by the gene known to be directly involved in a three-way gene translocation in a Burkitt lymphoma cell line. The function of this gene has not yet been determined. Two transcript variants encoding different isoforms have been found for this gene. [provided by RefSeq, Nov 2013]		

— VALIDATION IMAGES —

Sample: SiHa (Mouse) Lysate at 40 ug Primary:

Anti- BCL7C (bs-9763R) at 1/1000 dilution

Secondary: IRDye800CW Goat Anti-Rabbit IgG at 1/20000 dilution Predicted band size: 23 kD

Observed band size: 23 kD