

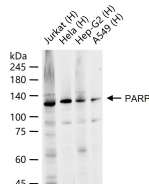
bsm-52433R**[Primary Antibody]****Bioss**
ANTIBODIES

www.bioss.com.cn

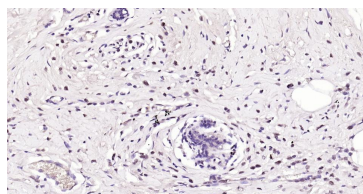
sales@bioss.com.cn

techsupport@bioss.com.cn

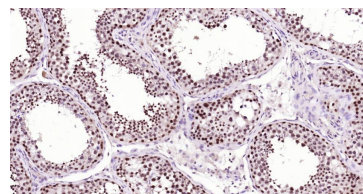
400-901-9800

PARP Recombinant Rabbit mAb**— DATASHEET —****Host:** Rabbit**Isotype:** IgG**Clonality:** Recombinant**CloneNo.:** 45G1**GeneID:** 142**SWISS:** P09874**Target:** PARP**Immunogen:** A synthesized peptide derived from human PARP 1: 1-50.**Purification:** affinity purified by Protein A**Concentration:** 1mg/ml**Storage:** 1*TBS (pH7.4), 0.05% BSA, 40% Glycerol. Preservative: 0.02% Proclin300.
Shipped at 4°C. Store at -20°C for one year. Avoid repeated freeze/thaw cycles.**Background:** This gene encodes a chromatin-associated enzyme, poly(ADP-ribose)transferase, which modifies various nuclear proteins by poly(ADP-ribose)ylation. The modification is dependent on DNA and is involved in the regulation of various important cellular processes such as differentiation, proliferation, and tumor transformation and also in the regulation of the molecular events involved in the recovery of cell from DNA damage. In addition, this enzyme may be the site of mutation in Fanconi anemia, and may participate in the pathophysiology of type I diabetes. [provided by RefSeq, Jul 2008].**Applications:** WB (1:1000)**IHC-P** (1:100-500)**IHC-F** (1:100-500)**IF** (1:100-500)**Flow-Cyt** (1:50-100)**ICC/IF** (1:100-500)**Reactivity:** Human, Mouse**Predicted
MW.:** 112 kDa**Subcellular
Location:** Nucleus**— VALIDATION IMAGES —**

25 ug total protein per lane of various lysates (see on figure) probed with PARP monoclonal antibody, unconjugated (bsm-52433R) at 1:1000 dilution and 4°C overnight incubation. Followed by conjugated secondary antibody incubation at r.t. for 60 min.



Paraformaldehyde-fixed, paraffin embedded Human Breast Cancer; Antigen retrieval by boiling in sodium citrate buffer (pH6.0) for 15 min; Antibody incubation with PARP Monoclonal Antibody, Unconjugated(bsm-52433R) at 1:200 overnight at 4°C, followed by conjugation to the SP Kit(Rabbit, SP-0023) and DAB (C-0010) staining.



Paraformaldehyde-fixed, paraffin embedded Human Testis; Antigen retrieval by boiling in sodium citrate buffer (pH6.0) for 15 min; Antibody incubation with PARP Monoclonal Antibody, Unconjugated(bsm-52433R) at 1:200 overnight at 4°C, followed by conjugation to the SP Kit(Rabbit, SP-0023) and DAB (C-0010) staining.

— SELECTED CITATIONS —

- **[IF=4.3]** Ying - jie Ren. et al. rhCC16 Suppresses Cellular Senescence and Ameliorates COPD - Like Symptoms by Activating the AMPK/Sirt1 - PGC - 1 - α -TFAM Pathway to Promote Mitochondrial Function. J CELL MOL MED. 2025 Apr;29(8):e70566 WB ;Human. 40259209