

human HLA-DR Mouse mAb

Catalog Number: bsm-30090M

Target Protein: human HLA-DR

Concentration: 1mg/ml

Form: Liquid

Host: Mouse

Clonality: Monoclonal

Clone No.: 2H4

Isotype: Mouse IgG2a, k

Applications: Flow-Cyt (1ug/Test)

Reactivity: Human

Entrez Gene: 3122

Swiss Prot: P01903

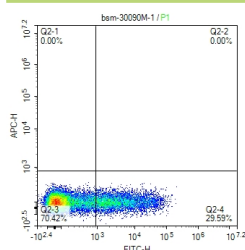
Purification: affinity purified by Protein G

Storage: 0.01M TBS (pH7.4).

Shipped at 4°C. Store at -20°C for one year. Avoid repeated freeze/thaw cycles.

Background: HLA-DRA is one of the HLA class II alpha chain paralogues. This class II molecule is a heterodimer consisting of an alpha and a beta chain, both anchored in the membrane. It plays a central role in the immune system by presenting peptides derived from extracellular proteins. Class II molecules are expressed in antigen presenting cells (APC: B lymphocytes, dendritic cells, macrophages). The alpha chain is approximately 33-35 kDa and its gene contains 5 exons. Exon 1 encodes the leader peptide, exons 2 and 3 encode the two extracellular domains, and exon 4 encodes the transmembrane domain and the cytoplasmic tail. DRA does not have polymorphisms in the peptide binding part and acts as the sole alpha chain for DRB1, DRB3, DRB4 and DRB5. [provided by RefSeq]

VALIDATION IMAGES



scatter diagram showing peripheral blood lymphocytes stained with human HLA-DR, The cells were incubated with the antibody (bsm-30090M, 1 µg/Test) for 30 min at room temperature. The secondary antibody used for 40 min at room temperature. Acquisition of >20,000 events was performed.