

bs-6955R**[Primary Antibody]****Bioss**
ANTIBODIES

www.bioss.com.cn

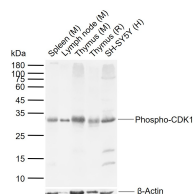
sales@bioss.com.cn

techsupport@bioss.com.cn

400-901-9800

Phospho-CDK1 (Thr14) Rabbit pAb**— DATASHEET —**

<p>Host: Rabbit</p> <p>Clonality: Polyclonal</p> <p>GeneID: 983</p> <p>Target: Phospho-CDK1 (Thr14)</p> <p>Purification: affinity purified by Protein A</p> <p>Concentration: 1mg/ml</p> <p>Storage: 0.01M TBS (pH7.4) with 1% BSA, 0.02% Proclin300 and 50% Glycerol. Shipped at 4°C. Store at -20°C for one year. Avoid repeated freeze/thaw cycles.</p> <p>Background: The protein encoded by this gene is a member of the Ser/Thr protein kinase family. This protein is a catalytic subunit of the highly conserved protein kinase complex known as M-phase promoting factor (MPF), which is essential for G1/S and G2/M phase transitions of eukaryotic cell cycle. Mitotic cyclins stably associate with this protein and function as regulatory subunits. The kinase activity of this protein is controlled by cyclin accumulation and destruction through the cell cycle. The phosphorylation and dephosphorylation of this protein also play important regulatory roles in cell cycle control. Alternatively spliced transcript variants encoding different isoforms have been found for this gene. [provided by RefSeq, Mar 2009]</p>	<p>Isotype: IgG</p> <p>SWISS: P06493</p>	<p>Applications: WB (1:1000-2000)</p> <p>Reactivity: Human, Mouse, Rat</p> <p>Predicted MW.: 34 kDa</p> <p>Subcellular Location: Cytoplasm ,Nucleus</p>
--	--	---

— VALIDATION IMAGES —

Sample: Lane 1: Mouse Spleen tissue lysates
 Lane 2: Mouse Lymph node tissue lysates Lane 3:
 Mouse Thymus tissue lysates Lane 4: Rat Thymus
 tissue lysates Lane 5: Human SH-SY5Y cell
 lysates Primary: Anti-Phospho-CDK1 (Thr14)
 (bs-6955R) at 1/1000 dilution Secondary:
 IRDye800CW Goat Anti-Rabbit IgG at 1/20000
 dilution Predicted band size: 34 kDa Observed
 band size: 32 kDa