
SPINK8 Rabbit pAb

Catalog Number: bs-17675R

Target Protein: SPINK8

Concentration: 1mg/ml

Form: Liquid

Host: Rabbit

Clonality: Polyclonal

Isotype: IgG

Applications: IHC-P (1:100-500), IHC-F (1:100-500), IF (1:100-500)

Reactivity: Human

Predicted MW: 9 kDa

Subcellular: Secreted

Locations:

Entrez Gene: 646424

Swiss Prot: P0C7L1

Source: KLH conjugated synthetic peptide derived from human SPINK8: 22-60/97.

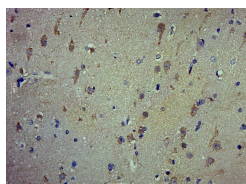
Purification: affinity purified by Protein A

Storage: 0.01M TBS (pH7.4) with 1% BSA, 0.02% Proclin300 and 50% Glycerol.

Shipped at 4°C. Store at -20°C for one year. Avoid repeated freeze/thaw cycles.

Background: SPINK8 (Serine Peptidase Inhibitor, Kazal Type 8 (Putative)) is a Protein Coding gene. GO annotations related to this gene include serine-type endopeptidase inhibitor activity.

VALIDATION IMAGES



Paraformaldehyde-fixed, paraffin embedded (Human glioma); Antigen retrieval by boiling in sodium citrate buffer (pH6.0) for 15min; Block endogenous peroxidase by 3% hydrogen peroxide for 20 minutes; Blocking buffer (normal goat serum) at 37°C for 30min; Antibody incubation with (SPINK8) Polyclonal Antibody, Unconjugated (bs-17675R) at 1:500 overnight at 4°C, followed by a conjugated secondary (sp-0023) for 20 minutes and DAB staining.