

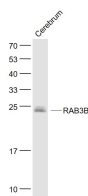
bsm-51316M**[Primary Antibody]****RAB3B Mouse mAb****BioSS**
ANTIBODIES

www.bioss.com.cn

sales@bioss.com.cn

techsupport@bioss.com.cn

400-901-9800

— DATASHEET —**Host:** Mouse**Clonality:** Monoclonal**GeneID:** 5865**Target:** RAB3B**Purification:** affinity purified by Protein G**Concentration:** 1mg/ml**Storage:** 0.01M TBS (pH7.4) with 1% BSA, 0.02% Proclin300 and 50% Glycerol.
Shipped at 4°C. Store at -20°C for one year. Avoid repeated freeze/thaw cycles.**Background:** RAB3B (RAB3B, Member RAS Oncogene Family) is a Protein Coding gene. Among its related pathways are Sertoli-Sertoli Cell Junction Dynamics and Tight junction. GO annotations related to this gene include GTP binding and GDP binding. An important paralog of this gene is RAB37.**Isotype:** IgG1, k**CloneNo.:** 7F5**SWISS:** P20337**Applications:** **WB** (1:200-2000)**IHC-P** (1:100-500)**IHC-F** (1:20-200)**IF** (1:20-200)**ICC/IF** (1:100-500)**Reactivity:** Mouse (predicted: Human, Rat)**Predicted MW.:** 24 kDa**Subcellular Location:** Cell membrane**— VALIDATION IMAGES —**

Sample: Cerebrum (Mouse) Lysate at 40 ug
Primary: Anti- RAB3B (bsm-51316M) at 1/1000
dilution Secondary: IRDye800CW Goat Anti-Mouse IgG at 1/20000 dilution Predicted band size: 24 kD Observed band size: 24 kD