

bsm-52040R**[Primary Antibody]****COL10A1 Recombinant Rabbit mAb****BioSS**
ANTIBODIES

www.bioss.com.cn

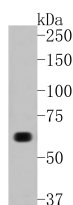
sales@bioss.com.cn

techsupport@bioss.com.cn

400-901-9800

— DATASHEET —

Host: Rabbit	Isotype: IgG	Applications: WB (1:500-2000)
Clonality: Recombinant	CloneNo.: 6C10	Reactivity: Rat (predicted: Human, Mouse)
GeneID: 1300	SWISS: A1L4P2	Predicted MW.: 73 kDa
Target: COL10A1		Subcellular Location: Extracellular matrix
Immunogen: KLH conjugated synthetic peptide derived from human COL10A1:: 501-600/680.		
Purification: affinity purified by Protein A		
Concentration: 1mg/ml		
Storage: 0.01M TBS (pH7.4) with 1% BSA, 0.02% Proclin300 and 50% Glycerol. Shipped at 4°C. Store at -20°C for one year. Avoid repeated freeze/thaw cycles.		
Background: This gene encodes the alpha chain of type X collagen, a short chain collagen expressed by hypertrophic chondrocytes during endochondral ossification. Unlike type VIII collagen, the other short chain collagen, type X collagen is a homotrimer. Mutations in this gene are associated with Schmid type metaphyseal chondrodysplasia (SMCD) and Japanese type spondylometaphyseal dysplasia (SMD). [provided by RefSeq, Jul 2008].		

— VALIDATION IMAGES —

Sample: Lane 1: Liver (Rat) Lysate at 40 ug
Primary: Anti-Collagen X (bsm-52040R) at 1/500
dilution Secondary: Goat Anti-Rabbit IgG - HRP
at 1/5000 dilution Predicted band size: 73 kD
Observed band size: 66 kD

— SELECTED CITATIONS —

- **[IF=9.078]** Tzu-Hsiang Lin. et al. A bilineage thermosensitive hydrogel system for stimulation of mesenchymal stem cell differentiation and enhancement of osteochondral regeneration. Compos Part B-Eng. 2022 Jan;;109614 ICC ;Rabbit. 10.1016/j.compositesb.2022.109614