

**bsm-60758R****[ Primary Antibody ]****BioSS**  
ANTIBODIES

www.bioss.com.cn

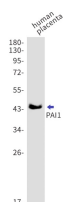
sales@bioss.com.cn

techsupport@bioss.com.cn

400-901-9800

**PAI1 Recombinant Rabbit mAb****— DATASHEET —**

<b>Host:</b> Rabbit	<b>Isotype:</b> IgG	<b>Applications:</b> WB (1:1000)
<b>Clonality:</b> Recombinant		<b>Reactivity:</b> Human
<b>GeneID:</b> 5054	<b>SWISS:</b> P05121	
<b>Target:</b> PAI1		
<b>Immunogen:</b> A synthesized peptide derived from human PAI 1: 100-158/402.		<b>Predicted MW.:</b> 43 kDa
<b>Purification:</b> affinity purified by Protein A		<b>Subcellular Location:</b> Secreted
<b>Concentration:</b> 1mg/ml		
<b>Storage:</b> 50mM Tris-Glycine (pH7.4), 0.15M NaCl, 40% Glycerol, 0.02% Proclin300 and 0.05% BSA. Shipped at 4°C. Store at -20°C for one year. Avoid repeated freeze/thaw cycles.		
<b>Background:</b> PAI1 (plasminogen activator inhibitor 1) is originally cloned from human endothelial cell (Pannekoek 1986, Ginsburg 1986) and rat hepatoma cell 3 cDNA libraries. As a member of the serpin family of serine protease inhibitors, PAI1 inhibits both tissue type plasminogen activator (tPA) and urokinase type plasminogen activator (uPA). High PAI1 levels are associated with an increased risk of thromboembolic disease while PAI1 deficiency may represent an inherited autosomal recessive bleeding disorder.		

**— VALIDATION IMAGES —**

Blocking buffer: 5% NFDM/TBST Primary Ab  
dilution: 1:1000 Primary Ab incubation  
condition: 2 hours at room temperature  
Secondary Ab: Goat Anti-Rabbit IgG H&L (HRP)  
Lysate: human placenta Protein loading  
quantity: 20 µg Predicted MW: 45 kDa Observed  
MW: 45 kDa