

bs-23140R**[Primary Antibody]****CX3CL1 Rabbit pAb****BioSS**
ANTIBODIES

www.bioss.com.cn

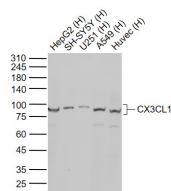
sales@bioss.com.cn

techsupport@bioss.com.cn

400-901-9800

— DATASHEET —

Host: Rabbit Clonality: Polyclonal GeneID: 6376 Target: CX3CL1 Immunogen: KLH conjugated synthetic peptide derived from human CX3CL1: 61-150/397. < Extracellular > Purification: affinity purified by Protein A Concentration: 1mg/ml Storage: 0.01M TBS (pH7.4) with 1% BSA, 0.02% Proclin300 and 50% Glycerol. Shipped at 4°C. Store at -20°C for one year. Avoid repeated freeze/thaw cycles. Background: CX3CL1 is a member of the delta chemokine subfamily that contains a unique CX3C cysteine motif near the N-terminal. Unlike other known chemokines, it is a type 1 membrane protein containing a chemokine domain tethered on a long mucin-like stalk. CX3CL1, a leukocyte chemoattractant, is expressed in various tissues including the brain, heart, lung, kidney, skeletal muscle, and testis. The expression is reported to be up-regulated in endothelial cells and microglia by inflammatory signals. CX3CR1, a specific receptor for fractalkine, mediates both leukocyte migration and adhesion.	Isotype: IgG SWISS: P78423	Applications: WB (1:500-2000) Reactivity: Human Predicted MW.: 41 kDa Subcellular Location: Secreted ,Cell membrane
--	---	--

— VALIDATION IMAGES —

Sample: Lane 1: Human HepG2 cell lysates Lane 2: Human SH-SY5Y cell lysates Lane 3: Human U251 cell lysates Lane 4: Human A549 cell lysates Lane 5: Human Huvec cell lysates Primary: Anti-CX3CL1 (bs-23140R) at 1/1000 dilution Secondary: IRDye800CW Goat Anti-Rabbit IgG at 1/20000 dilution Predicted band size: 41 kD Observed band size: 95 kD