

bs-10237R**[Primary Antibody]****Inhibin Alpha Rabbit pAb****BioSS**
ANTIBODIES

www.bioss.com.cn

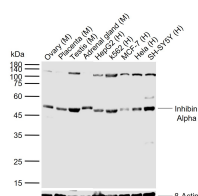
sales@bioss.com.cn

techsupport@bioss.com.cn

400-901-9800

— DATASHEET —

Host: Rabbit	Isotype: IgG	Applications: WB (1:500-2000)
Clonality: Polyclonal		Reactivity: Human, Mouse (predicted: Rat)
GeneID: 3623	SWISS: P05111	
Target: Inhibin Alpha		
Immunogen: KLH conjugated synthetic peptide derived from human Inhibin Alpha: 281-366/366.		Predicted MW.: 15 kDa
Purification: affinity purified by Protein A		Subcellular Location: Secreted
Concentration: 1mg/ml		
Storage: 0.01M TBS (pH7.4) with 1% BSA, 0.02% Proclin300 and 50% Glycerol. Shipped at 4°C. Store at -20°C for one year. Avoid repeated freeze/thaw cycles.		
Background: The inhibin alpha subunit joins either the beta A or beta B subunit to form a pituitary FSH secretion inhibitor. Inhibin has been shown to regulate gonadal stromal cell proliferation negatively and to have tumour-suppressor activity. In addition, serum levels of inhibin have been shown to reflect the size of granulosa-cell tumors and can therefore be used as a marker for primary as well as recurrent disease. However, in prostate cancer, expression of the inhibin alpha-subunit gene was suppressed and was not detectable in poorly differentiated tumor cells. Furthermore, because expression in gonadal and various extragonadal tissues may vary severalfold in a tissue-specific fashion, it is proposed that inhibin may be both a growth/differentiation factor and a hormone.		

— VALIDATION IMAGES —

Sample: Lane 1: Mouse Ovary tissue lysates Lane 2: Mouse Placenta tissue lysates Lane 3: Mouse Testis tissue lysates Lane 4: Mouse Adrenal gland tissue lysates Lane 5: Human HepG2 cell lysates Lane 6: Human K562 cell lysates Lane 7: Human MCF-7 cell lysates Lane 8: Human Hela cell lysates Lane 9: Human SH-SY5Y cell lysates
 Primary: Anti- Inhibin Alpha (bs-10237R) at 1/1000 dilution Secondary: IRDye800CW Goat Anti-Rabbit IgG at 1/20000 dilution Predicted band size: 15 kDa Observed band size: 53 kDa